

All students applying for the Merced College Registered Nursing program must meet the minimum passing score of 62% on their FIRST ATTEMPT of the ATI TEAS test. This is the ONLY version we will accept. If you submit another document from ATI that is NOT what we required, your application will be rejected - No Exceptions. You must submit your Individual Performance Profile printout(s) for other attempts (possibly earlier versions). If you are experiencing difficulties locating this exact profile on your ATI account, contact ATI at 800-667-7531 (online support).

## Individual Performance Profile



### ATI TEAS

Individual Name:	John Doe	Test Date:	4/15/2018
Institution:	Modesto JC	Attempt:	3 of 3
Program Type:	ADN	Days Since Last Attempt:	1541
Student Number:			

### Scores

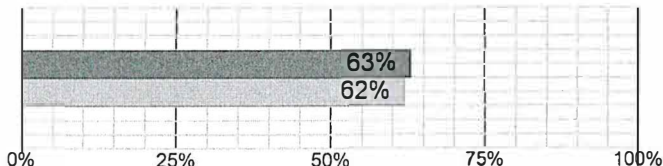
Total Score:

69.3%

Academic Preparedness Level: **Proficient**

National Mean: 65.6% All ADN Programs Mean: 66.1%

Percentile Rank: % of students who scored at or below your score



Reading Score:

83.0%

Math Score:

71.9%

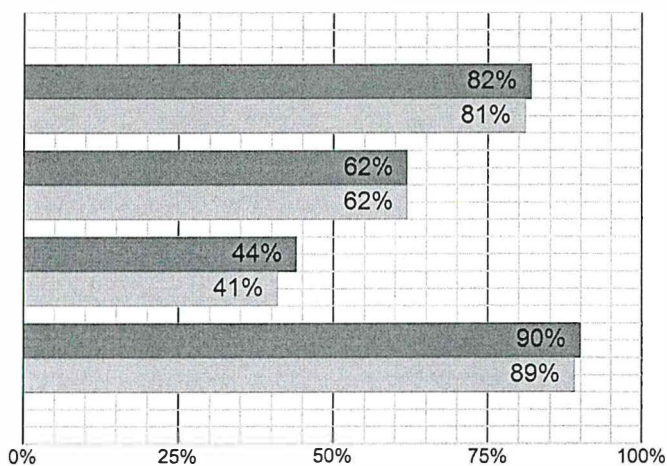
Science Score:

51.1%

English and Language Usage Score:

83.3%

Percentile Rank: % of students who scored at or below your score



National

All ADN Programs

Content areas do not add up to the total score

### Topics To Review

#### Reading (47 items)

##### Key Ideas and Details (22 items, 90.9% answered correctly)

Identify specific information from a printed communication. (ATI TEAS Study Manual R.1.5)

Identify information from a graphic representation of information. (ATI TEAS Study Manual R.1.6)

##### Craft and Structure (14 items, 78.6% answered correctly)

Recognize structure of texts in various formats. (ATI TEAS Study Manual R.2.2)

Evaluate the author's point of view in a given text. (ATI TEAS Study Manual R.2.6)

# Individual Performance Profile

## Test of Essential Academic Skills V Form C



Individual Name:	John Doe	Adjusted Individual Total Score:	62.7%
Student Number:		ATI Academic Preparedness Level:	Proficient
Institution:	CA State Stanislaus TEAS	National Mean:	64.3%
Program Type:	BSN	Program Mean:	70.6%
	1/24/2014	National Percentile Rank:	45
# of Questions:	150	Program Percentile Rank:	26
Attempt:	2 of 3		
Days since last attempt:	19		

### Scores

Sub-Scale	# Items	Adjusted		Adjusted		Adjusted Individual Score (% correct)											
		Individual Score	Mean	Percentile Rank	Individual Score (% correct)	1	10	20	30	40	50	60	70	80	90	100	
<b>TEAS Reading</b>	42	71.4%	70.5%	75.1%	49	36											
Paragraph and Passage Comprehension	19	73.7%	70.6%	75.0%													
Informational Source Comprehension	23	69.6%	71.9%	76.8%													
<b>TEAS Mathematics</b>	30	76.7%	69.0%	75.3%	66	51											
Numbers and Operations	19	73.7%	70.3%	75.8%													
Algebraic Applications	4	75.0%	69.0%	78.8%													
Data Interpretation	3	100.0%	65.1%	70.6%													
Measurement	4	50.0%	64.6%	72.5%													
<b>TEAS Science</b>	48	43.8%	53.6%	62.0%	33	15											
Human Body Science	11	45.5%	60.9%	65.7%													
Life Science	15	46.7%	53.4%	63.4%													
Earth and Physical Science	14	42.9%	53.9%	64.6%													
Scientific Reasoning	8	75.0%	65.2%	71.5%													
<b>TEAS English and Language Usage</b>	30	63.3%	63.8%	68.6%	51	37											
Grammar and Word Meanings in Context	15	40.0%	64.8%	69.8%													
Spelling and Punctuation	9	88.9%	60.1%	66.0%													
Structure	6	83.3%	69.5%	73.8%													

# Individual Performance Profile

## Test of Essential Academic Skills V Form B



Individual Name:	John Doe	Adjusted Individual Total Score:	60.7%
Student Number:		ATI Academic Preparedness Level:	Proficient
Institution:	CA State Sacramento	National Mean:	64.3%
Program Type:	BSN	Program Mean:	70.6%
	1/5/2013	National Percentile Rank:	40
# of Questions:	150	Program Percentile Rank:	21
Attempt:	1 of 3		
Days since last attempt:	0		

### Scores

Sub-Scale	# Items	Adjusted			Percentile Rank		Adjusted Individual Score (% correct)									
		Individual Score	Mean National	Mean Program	National	Program	1	10	20	30	40	50	60	70	80	90
<b>TEAS Reading</b>	<b>42</b>	<b>73.8%</b>	<b>70.5%</b>	<b>75.1%</b>	<b>56</b>	<b>42</b>										
Paragraph and Passage Comprehension	19	68.4%	70.6%	75.0%												
Informational Source Comprehension	23	78.3%	71.9%	76.8%												
<b>TEAS Mathematics</b>	<b>30</b>	<b>50.0%</b>	<b>69.0%</b>	<b>75.3%</b>	<b>17</b>	<b>8</b>										
Numbers and Operations	19	47.4%	70.3%	75.8%												
Algebraic Applications	4	75.0%	69.0%	78.8%												
Data Interpretation	3	66.7%	65.1%	70.6%												
Measurement	4	25.0%	64.6%	72.5%												
<b>TEAS Science</b>	<b>48</b>	<b>54.2%</b>	<b>53.6%</b>	<b>62.0%</b>	<b>56</b>	<b>34</b>										
Human Body Science	11	45.5%	60.9%	65.7%												
Life Science	15	60.0%	53.4%	63.4%												
Earth and Physical Science	14	50.0%	53.9%	64.6%												
Scientific Reasoning	8	62.5%	65.2%	71.5%												
<b>TEAS English and Language Usage</b>	<b>30</b>	<b>63.3%</b>	<b>63.8%</b>	<b>68.6%</b>	<b>51</b>	<b>37</b>										
Grammar and Word Meanings in Context	15	53.3%	64.8%	69.8%												
Spelling and Punctuation	9	66.7%	60.1%	66.0%												
Structure	6	83.3%	69.5%	73.8%												