



MERCED COLLEGE

Los Banos Campus

2025 Facilities Master Plan Update



MERCED COLLEGE

Los Banos Campus 2025 Facilities Master Plan Update

SUPERINTENDENT/PRESIDENT
Chris Vitelli, Ed.D.

PROJECT TEAM
Gensler, Facilities Planning

BOARD OF TRUSTEES

Carmen Ramirez, President
Sue Chappell, Vice President
Kory Benson, Clerk
Mario Mendoza, Trustee
Ernie Ochoa, Trustee
Joe Gutierrez, Trustee
John Pedrozo, Trustee
Liliana Reyes, Student Trustee

Letter from the President



Since its establishment as a full-time campus in 1971, the Los Banos Campus of Merced College has served as a beacon of educational opportunity for western Merced County. Built on a foundation of community support, visionary leadership, and a steadfast commitment to student success, the campus has grown significantly over the past five decades. From its humble beginnings in a former federal building to its current home on 125 acres generously donated by Larry and Georgeann Anderson, the campus has evolved in step with the region it serves.

The passage of Measure P in 2024—approved by nearly 74% of Los Banos voters—reaffirms the community’s strong belief in the power of education to transform lives. This \$46 million local bond measure marks a new chapter for the Los Banos Campus, enabling critical investments in infrastructure, instructional space, and workforce development. At the heart of the revised Merced College Los Banos Campus Facilities Master Plan (FMP) is a commitment to align physical resources with the college’s mission: to provide equitable access to high-quality education and prepare students for success in college, careers, and life.

The updated plan reflects both current needs and future ambitions. It includes new Career Technical Education (CTE) facilities to support programs in healthcare, agriculture, computer information systems, automotive technology, and welding. It builds on recent additions such as the Agriculture Modular Building and Greenhouse, and it anticipates future growth in dual enrollment, adult education, and student support services. It also places a renewed emphasis on creating welcoming, collaborative spaces that foster learning, engagement, and belonging.

This revised FMP is more than a construction blueprint—it is a promise to the Los Banos community that Merced College will continue to invest in their future, provide relevant training for high-demand careers, and create a campus that reflects the pride and potential of this remarkable region.

Sincerely,

A handwritten signature in black ink that reads "Chris Vitelli". The signature is fluid and cursive, with a small flourish at the end.

Chris Vitelli, Ed.D.
Superintendent/President

Facilities Planning Principles

The Facilities Planning Principles were developed during the 2019 planning process to support the Educational Master Plan goals, address key planning issues, and provide the basis for discussions related to site and facilities improvements.

These principles were reviewed and updated in 2020 with the Facilities Master Plan (FMP) Task Force and used develop the recommendations included in this 2025 Facilities Master Plan Update for the Los Banos Campus.



STUDENT
SUCCESS



ACCESS +
WAYFINDING



COLLEGIATE
IDENTITY



EFFECTIVE +
EFFICIENT



STEWARDSHIP
OF RESOURCES



COMMUNITY
ENGAGEMENT

STUDENT SUCCESS

- Improve access to student support services
- Integrate and consolidate functions and services
- Develop spaces to encourage collaboration and engagement
- Create a mixture of active and quiet spaces

ACCESS + WAYFINDING

- Develop welcoming and inviting campus entries
- Improve campus organization to enhance wayfinding
- Create logical groupings of functions
- Improve physical connections (pedestrian, bike, vehicular, transit)
- Enhance campus safety and security

COLLEGIATE IDENTITY

- Create a collegiate campus identity
- Enhance student and faculty engagement
- Develop campus spaces to support collaboration
- Create a sense of belonging and pride
- Improve campus edges and image within community

EFFECTIVE + EFFICIENT

- Align facilities to support college priorities
- Renovate or replace inefficient and under-performing facilities
- Right-size facilities to support program needs
- Develop flexible, multi-purpose space to adapt over time
- Position to maximize state funding opportunities

STEWARDSHIP OF RESOURCES

- Optimize available resources
- Increase awareness and create a culture of sustainability
- Prioritize well-being, health, and comfort in design
- Increase partnerships and collaborations
- Create a safe and comfortable campus environment

COMMUNITY ENGAGEMENT

- Increase visibility of campuses
- Strengthen connections with surrounding communities
- Improve access to college events and performances
- Develop campus to enhance community engagement
- Enhance community partnerships

Los Banos Campus

RECOMMENDATIONS

The 2025 Facilities Master Plan (FMP) recommendations for the Los Banos Campus present an overall picture of the future developed campus that is informed by the Facilities Planning Principles, the analysis of existing conditions, and discussions with the campus community.

The plan includes recommendations for new construction, renovations, and site development projects.

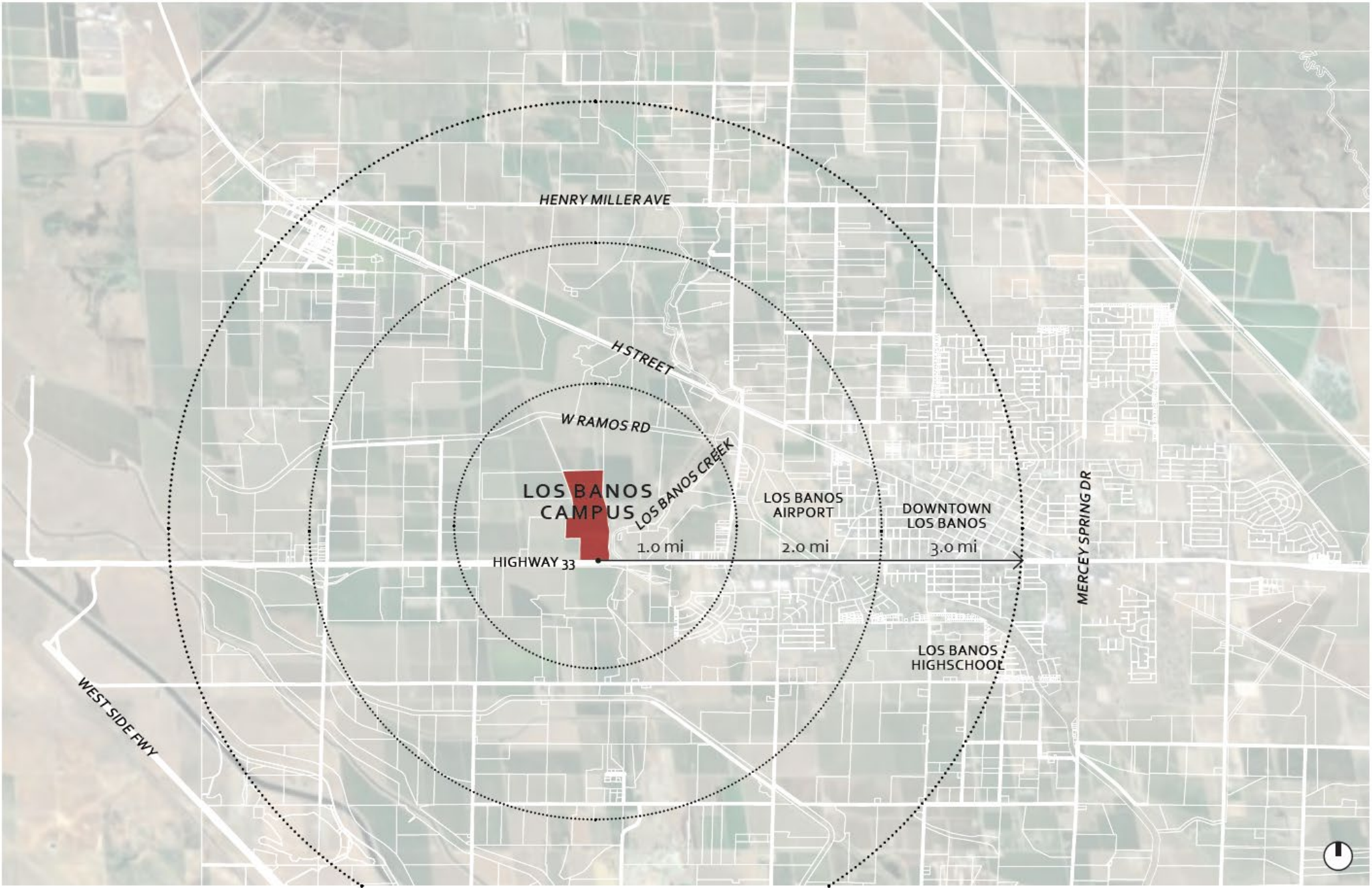
The recommendations are organized into the following sections:

LOCAL CONTEXT
EXISTING CONDITIONS
OFFSITE FACILITIES
2025 FACILITIES MASTER PLAN
FMP PROJECT ALIGNMENTS
PROJECT DESCRIPTIONS

Local Context

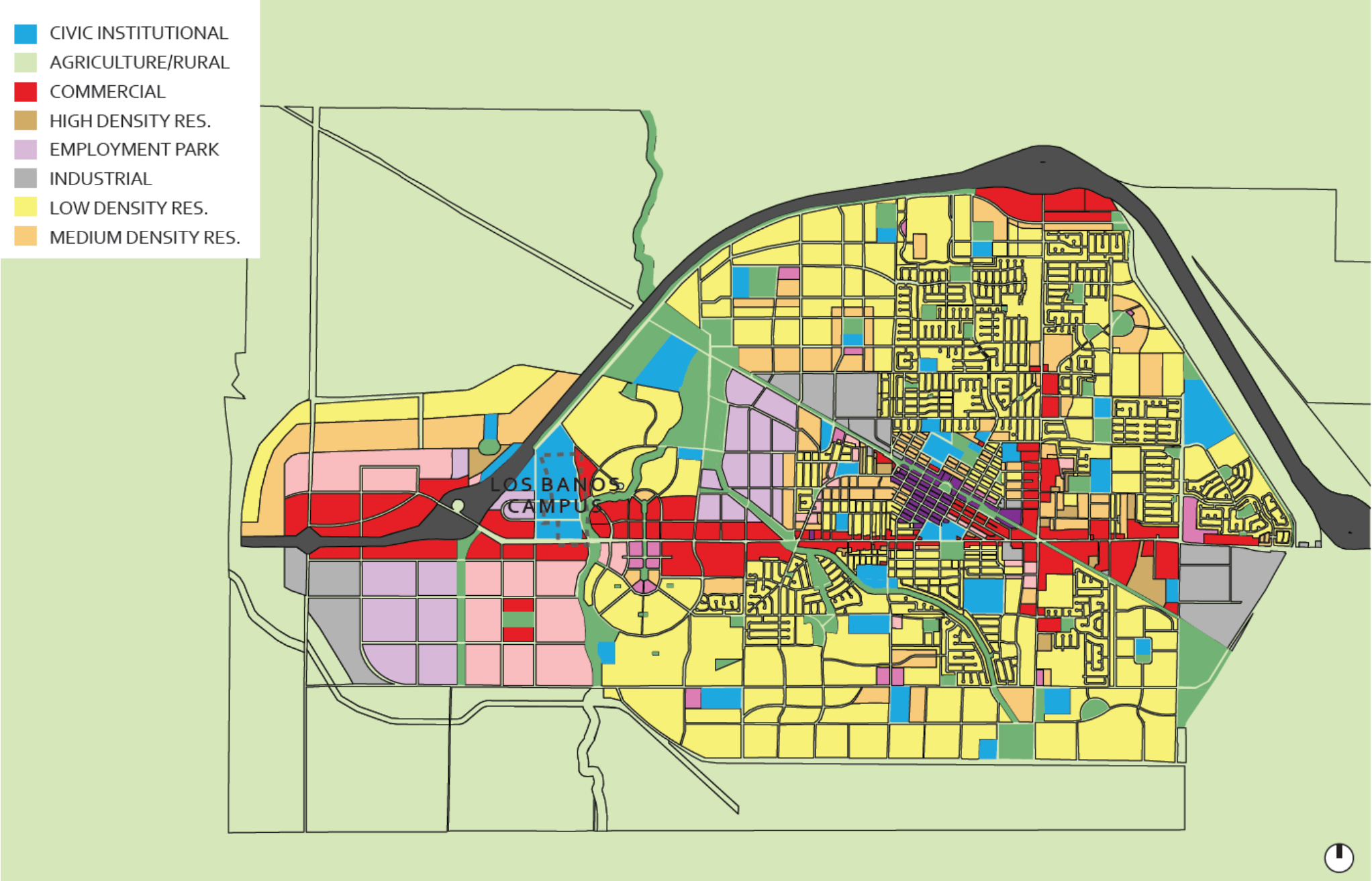
The Los Banos Campus is 120 acres and located 2.6 miles from Downtown Los Banos and approximately 40 miles south of the Merced Campus.

The Campus is a full-service educational center of Merced College, providing services to residents of the Westside of Merced County.



Local Context

The Campus is zoned as Civic / Institutional Land Use within the 2030 Los Banos General Plan with mostly Agriculture / Rural land to the north, south, and west, and Downtown Los Banos to the east.



2030 General Plan

Existing Conditions

The existing campus occupies a small portion of the land owned by Merced College with frontage on CA-152 E / CA-33S. A main entry drive leads to a loop road with parking on either side of the campus core consisting of three permanent facilities that opened in 2007.

Recent updates to the campus since the 2019 Facilities Master Plan include:

Agricultural Science

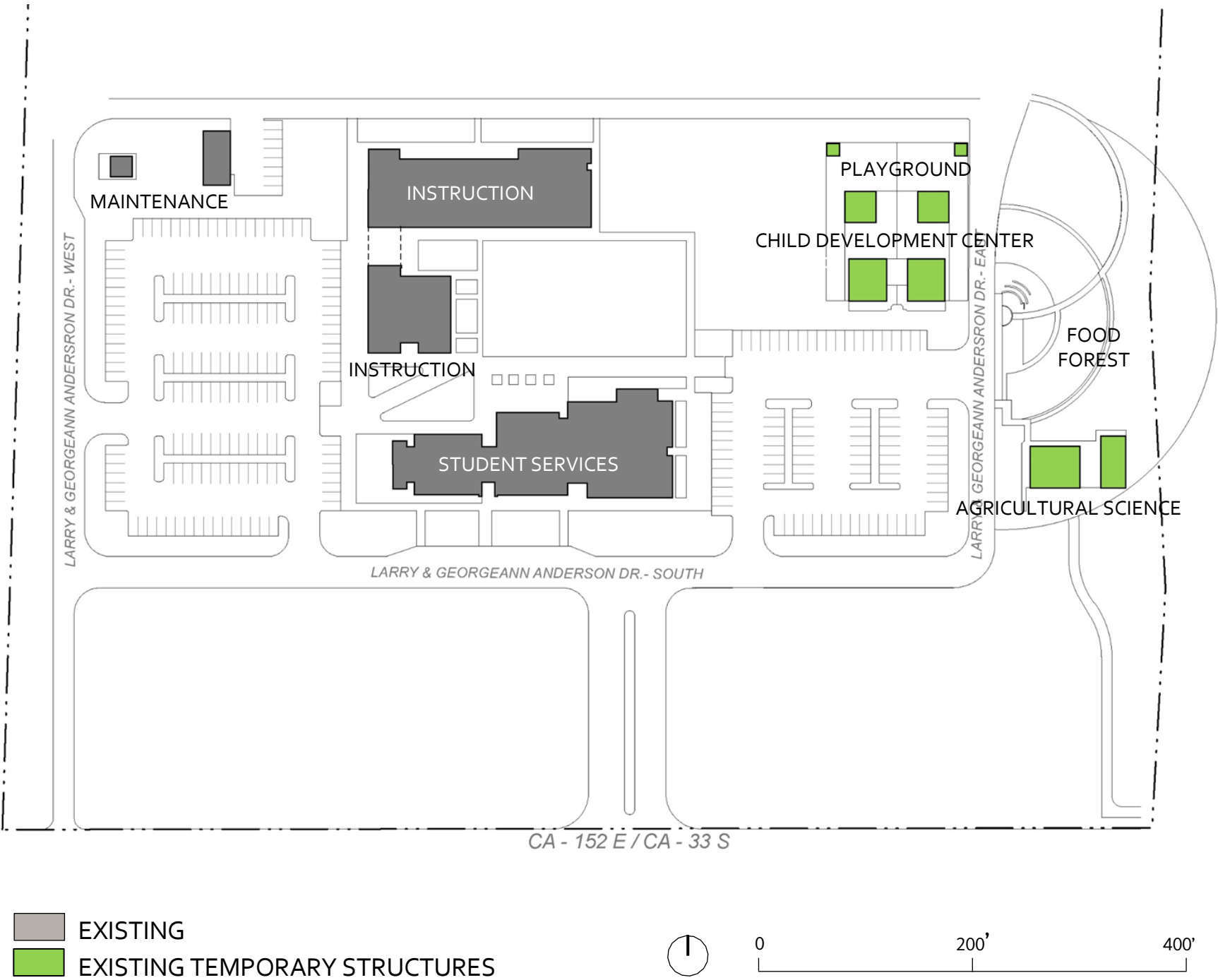
This new program will provide classroom space and a greenhouse to assist in providing a sustainability plan for the Food Forest and enhance community engagement on campus.

Child Development Center

A new Child Development Center was constructed on campus and includes a complex of temporary structures and a playground.

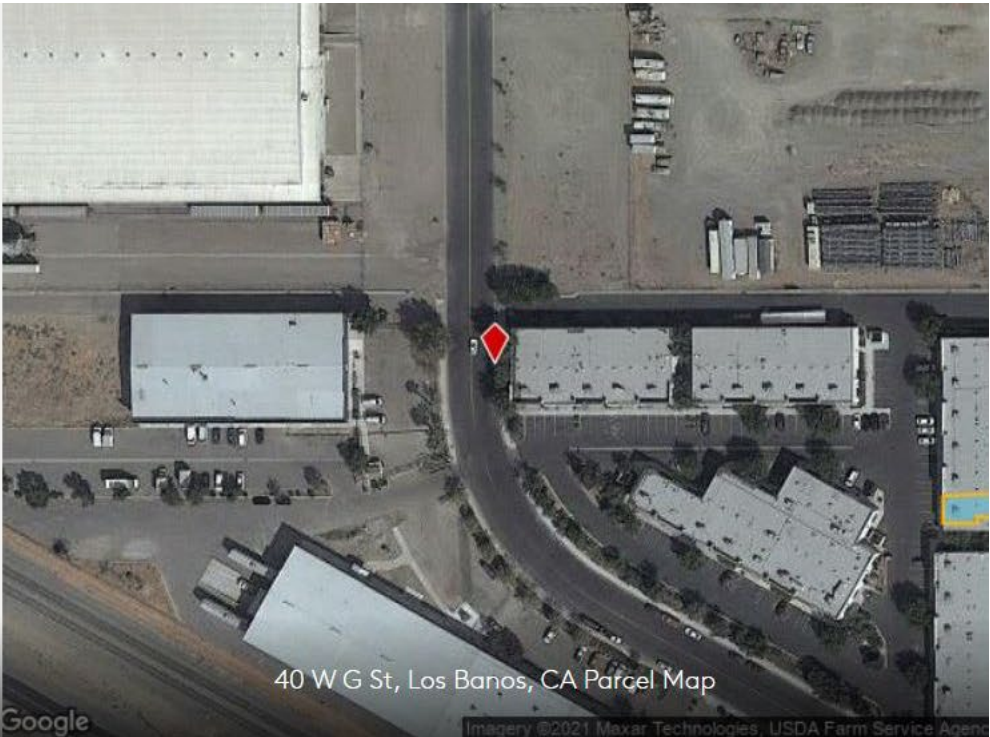
Food Forest

The Food Forest provides a communal space for food production and connects the campus with the community with spaces to gather and host events and workshops.



Offsite Facilities

The Welding Program is currently located offsite in leased facilities. While the labs are functional, the remote location isolates the students, faculty and staff from the campus core where important support services are located.



Room # ▼	Suffix	Description ▼	Room Use Code ▼	TOP/CSS Code ▼	Stations ▼	ASF ▼
102		Office	310 - Office	0956 - Manufacturing and Industrial Technology	3	209
104		Student lockers	215 - Class Lab Service	0956 - Manufacturing and Industrial Technology	0	26
108		Lab	210 - Class Lab	0956 - Manufacturing and Industrial Technology	12	755
109		Lab	210 - Class Lab	0956 - Manufacturing and Industrial Technology	12	1,963
101		Classroom	110 - Classroom	0956 - Manufacturing and Industrial Technology	24	753

2025 Facilities Master Plan

The 2025 Facilities Master Plan serves as a guide for future development, as a vehicle to maximize funding. It provides a quantitative and qualitative description of the College’s strategy to support the educational program needs, address the long range forecast for enrollment, and maximize funding opportunities.

The plan provides a framework for future development including the placement of new facilities, the renovation of existing facilities, and additional facilities the campus has expressed interest in or may require beyond the 2025 Facilities Master Plan.

NEW CONSTRUCTION

- Automotive Technology Building
- Welding Building
- Allied Health Building
- Student Union

RENOVATION

- Student Services Building

SITE DEVELOPMENT

- Quad Renovation

EXISTING

RENOVATION

NEW CONSTRUCTION

FUTURE (BEYOND FMP)



FMP Project Alignments

This section includes a description of the recommended projects and how they reflect the Facilities Planning Principles.

All of the projects identified in this 2025 Facilities Master Plan align with multiple facilities planning principles that were developed during the planning process. This matrix highlights these important intersections.



NEW CONSTRUCTION						
Automotive Technology Building	●	●				●
Welding Building	●	●	●	●		●
Allied Health Building	●	●	●			●
Student Union	●	●	●		●	●
RENOVATION						
Student Services Building	●	●		●	●	
SITE MODIFICATION						
Quad Renovation	●	●	●	●	●	●

Project Phases

The development of project phases is guided by the language in the Measure P Bond Measure and aligned with the District’s long-term priorities. Phase 1 projects are expected to be funded by Measure P, up to the approved \$46 million. Additional funding sources will be required for Phase 2 and Phase 3 projects.

- Phase 1

1

Quad Renovation

2

New Welding Building

3

New Automotive Technology Building

4

Student Services Renovation
- Phase 2

5

New Allied Health Building
- Phase 3

6

New Student Union



Phase 1

- 1

Quad Renovation
The Quad Renovation project will include the construction of a permanent stage to support a variety of campus and community events, including the year-end graduation ceremony. This major site improvement will enhance the campus’s outdoor space and foster greater community engagement.
- 2

New Welding Building
The new building will provide permanent space on the Los Banos Campus to support the Welding Program that is currently housed in leased facilities. Welding equipment will be relocated into the new building that will provide indoor and outdoor welding areas to support the growing program. The proposed location includes a large outdoor yard with a separate vehicular entrance.
- 3

New Automotive Technology Building
The New Automotive Technology Building will support the growing need for career technical education pathways at Los Banos. It will provide instructional space designed to meet the growing demand for skilled technicians in the region. This facility will offer hands-on training aligned with current industry standards.
- 4

Student Services Renovation
The Student Services renovation will create an appealing space capable of housing programmatic growth in Los Banos. The entry to the Student Services Building will become a Welcome Center to support application and registration completion for new students, while the existing support services footprint will be renovated to increase counseling office space. Additionally, library and tutorial services will be combined into a student-friendly learning resources center, enhancing support services and student engagement.



Phase 2

- 5

New Allied Health Building

The new Allied Health Building will support the expansion of healthcare-related programs, providing modern classrooms and lab spaces tailored to industry requirements. This facility will help prepare students for in-demand careers to meet regional healthcare workforce needs.



Phase 3

6 New Student Union

The new Student Union Building will play a vital role in shaping the overall student experience on campus. Envisioned as a dynamic hub of activity, it will foster a sense of community, enhance student engagement, and offer opportunities for personal growth and development.



Potential Public Private Partnerships

Land to the south of the campus is proposed to be designated for future potential public-private partnerships. This provides the opportunity to explore development ideas with business and industry partners and enhance the visibility of the Los Banos Campus along a visible corridor.

Depending on the type of partnership the District establishes, the new Allied Health Building may be relocated to this designated space.



Long Term Vision

The long-term vision for the Los Banos Campus includes potential expansion to the north into land currently occupied by the District. This diagram outlines a conceptual zoning plan that ties into the campus core through a series of pedestrian and vehicular pathways.



