

Los Banos Campus Forum

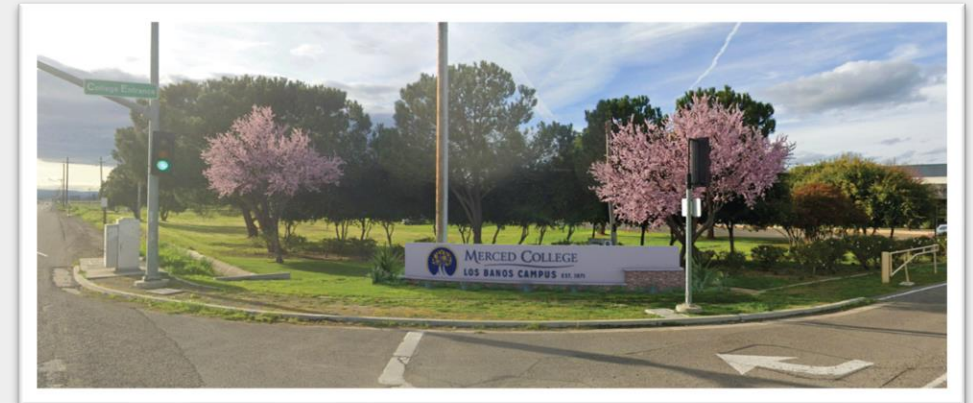
Friday, February 21st

Forum Topics

- Accomplished Projects
- Bond Update
 - Potential Bond Projects
- Facility Usage Calculations
- Instruction Update
- Enrollment Update
- Upcoming Events
- Other / Q & A

Accomplished Projects

- Blue Devil's Brew Café
- Child Development Center
- New Building Names
- Outdoor Gym
- Food Forest
- Plant Science Modular – Expected completion June 2025
- Corner Sign
 - Boundary survey being completed next week
 - Begin in March, expected completion by June



Bond Update & Potential Bond Projects

- Measure P passed - November 2024
- Update Facilities Master Plan
(Los Banos Campus Only) – April 2025
- Identify bond projects – May 2025
- Establish Bond Oversight Committee –
May 2025
- First bond issuance – June 2025
- Begin projects – July 2025



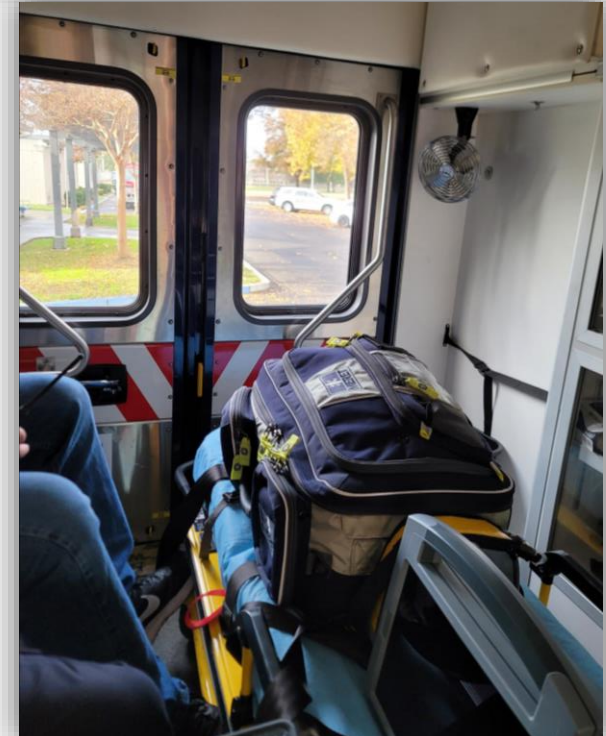
2019 Facilities Master Plan

Facility Usage Calculations

- State funding for capital projects is based on scoring criteria
- Space Analysis – Lecture, Lab, Office space, etc.
- Capacity/Load Ratios – over or under built in each category
- Currently too much lecture space on LB campus
- Volume of online classes hurt our cap/load ratios
- As a result, LB CTE Building project score is not competitive

Instruction Update

- New Instructional Program
 - Our new EMT program started this spring 2025
 - The program is full with a waitlist!
- New Course Offerings
 - We have hired new adjunct faculty to expand & teach in...
 - Geography, Criminal Justice, ESL Noncredit, and Kinesiology
- Child Development Center Updates
 - Higher demand for childcare services through word-of-mouth!
 - The majority of our children are sons/daughters of LB FT students.
 - Currently serving 13 preschool students and 6 infants, waitlist of 10



Enrollment Update

- LB FTES Increasing

Spring 2023	Spring 2024	Spring 2025*
382.67	441.80	538.18
	15.45% increase	21.82% increase

*Current projection versus spring 2023 and spring 2024 that are actuals.

- Growth attributed to...

- More students, census headcount from 3,351 in 2023 to 4,167 in 2025
- New courses and programs from 182 sections in 2023 to 193 in 2025
- Higher percentage fill of sections from 68.46% in 2023 to 78.15%

Upcoming Events

- State of the College at the Los Banos Campus
 - April 7th – 11:30 AM – 1:00 PM
 - The 11th Annual State of the College Address & Luncheon with the presentation of The President's Medallion Award to the Anderson Family
- Graduation
 - May 22nd, 2025 at 6:00 PM

Get your
State of the College
tickets here!



Questions?

