

Glossary of Terms

**Abbreviations**

- MC or MCCD—Merced Campus, including off-site locations other than Los Banos
- LB—Los Banos Campus
- Area 1—Science, Technology, Engineering and Math
- Area 2—English and Humanities. Plus honors, work experience, tutorial
- Area 3—Agriculture and Industrial Technology
- Area 4—Allied Health, Child Development, Public Safety, Kinesiology
- Area 5—Fine & Performing Arts and Social Sciences
- Area 6—Learning Resource Center. Plus Distance Education, Inmate Education
- Area 7—Los Banos Campus and off-campus centers
- Area 9—Business, Adult Education, Noncredit & Workforce Development; BRC
- Area LRC/SS—Learning Resources Center/Student Services (including LRNR, STGV and GUID and Inmate Education and Dual Enrollment courses)
- FTEF—Full-time Equivalent Faculty, a measure of teaching load in a given term
- FTES—Full-time Equivalent Student, formerly called “Average Daily Attendance.” It's a measure of workload based on enrollment and attendance. FTES is a calculation used by the state to determine funding levels per student as a measure of enrollment. One FTES represents 525 class (contact) hours of student instruction/activity in credit and noncredit courses. This is based on a theoretical student being enrolled in courses for 3 hours a day, 5 days a week for an academic year of 35 weeks ( $1 \text{ FTES} = 3 \times 5 \times 35 = 525$ ).
- WSCH—Weekly Student Contact Hours, a measure of time spent on instruction per week times the number of students in the class, and is a measure of revenue. A class with 30 students meeting 3 hours a week has 90 WSCH. The more students enrolled in a class, the higher the WSCH.
- AB 288—Dual Enrollment/High School courses
- CTE—Career Technical Education Fast-Track
- DE—Distance Education (includes hybrid, 100% internet, correspondence)
- Non-DE—Non-Distance Education
- ET—Embedded Tutor
- IE—Inmate Education
- LC—Learning Community
- OL—Overload
- SI—Supplemental Instruction
- Sec—Course Section
- ST—Short-Term

## Terms

- **Enrollment**—number of students in at least one course who receives any grade (A, B, C, P, D, F, NP, W, EW, FW, MW, I). Enrollment may be duplicated (each student is counted once for each course enrolled in), or unduplicated (each student is counted only once regardless of the number of courses enrolled in)
- **Completion Rate or Course Completion Rate (CCR)**—percent of students enrolled who completed the course (retained until the end of the semester), defined as a receiving a letter grade A, B, C, P, D, F, NP, I. *Formerly Retention.*  
Numerator: A, B, C, P, D, F, NP, I  
Denominator: A, B, C, P, D, F, NP, W, EW, FW, MW, RD, I
- **Success Rate or Course Success Rate (CSR)**—percent of students enrolled who receive a letter grade A, B, C, P.  
Numerator: A, B, C, P  
Denominator: A, B, C, P, D, F, NP, W, EW, FW, MW, RD, I
- **Persistence (term-to-term)**: Those students who receive any grade persists (enrolls in) the following term (i.e. fall to spring). Students who drop are not considered.
  - *Initial term*: Student enrolls in at least one course and receives any grade (A, B, C, P, D, F, NP, W, EW, FW, MW, RD, I)
  - *Following term*: Student enrolls in at least one course and receives any grade (A, B, C, P, D, F, NP, W, EW, FW, MW, RD, I)
  - *Persistence rate (term-to-term)*: The percent of students who persist from one semester to the next semester.
  - **NOTE**: This definition can apply to the course or program-level. Persistence is different from progress.
- **Progress**: Measured by those students who move from one level of the sequence to the next level (such as, non-credit to credit, MATH-04A to MATH-04B).
- **Productivity**: Measured by WSCH divided by FTEF. This calculation can be thought of as a measure of productivity (revenue divided by cost). The higher the number, the more cost effective a class can be considered to be.

**NOTE: The data is as of Census.**

Courses associated with the Global and Community Consciousness and Responsibility ISLO

AGBS-11	HIST-17AH
AGRI-10	HIST-17B
ANTH-02	HIST-17BH
ANTH-10	HIST-22
CRIM-01	HIST-23
ECON-01	HIST-29
ECON-01A	POSC-01
ECON-01B	POSC-02
ECON-02	PSYC-01A
GEOG-02	PSYC-01AH
HIST-04A	PSYC-15
HIST-04B	PSYC-25
HIST-09A	PSYC-51
HIST-09B	SOC-01
HIST-17A	SOC-02

## 2) Student Performance

Table 2A- CCR						
CCR	MCCD	MC	LB	DE	Non-DE	District Avg
2017-18	84.64%	84.47%	85.70%	83.28%	84.88%	85.32%
2018-19	85.57%	85.23%	87.80%	85.10%	85.71%	86.01%
2019-20	84.19%	84.08%	84.88%	81.90%	85.14%	84.11%
2020-21	83.53%	83.02%	86.63%	83.44%	98.70%	82.46%
2021-22	86.62%	86.25%	89.01%	86.57%	86.86%	85.85%

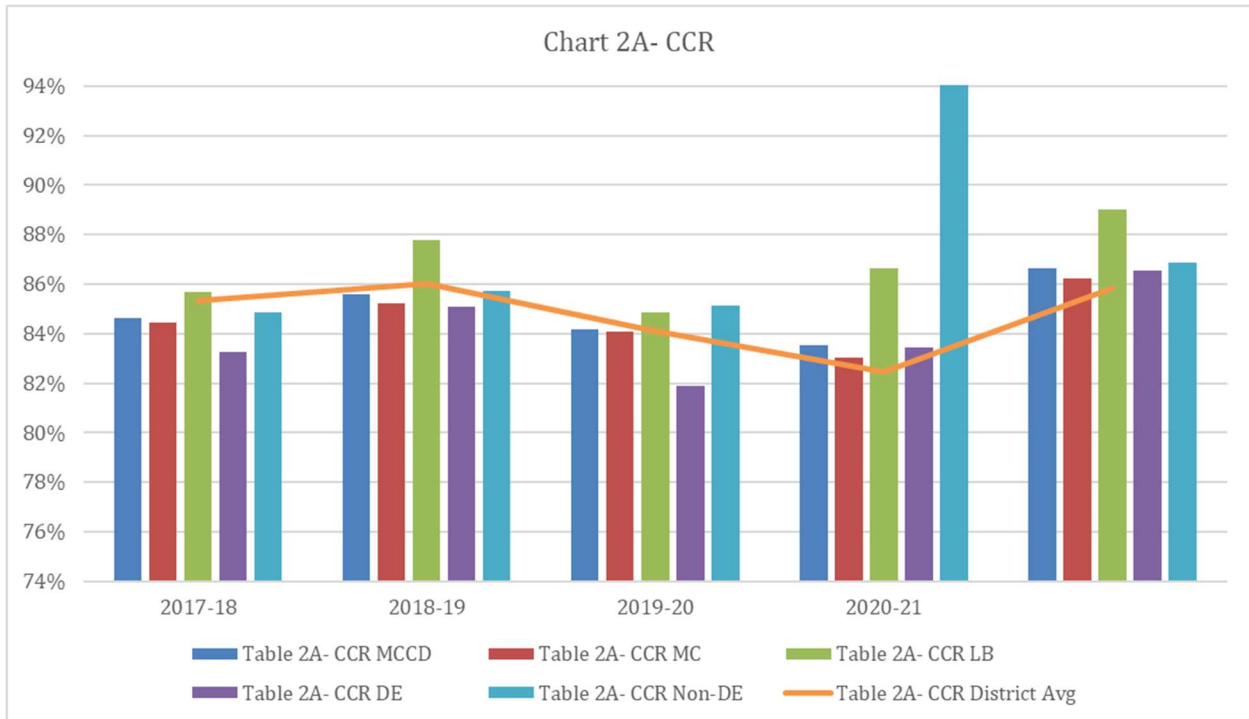
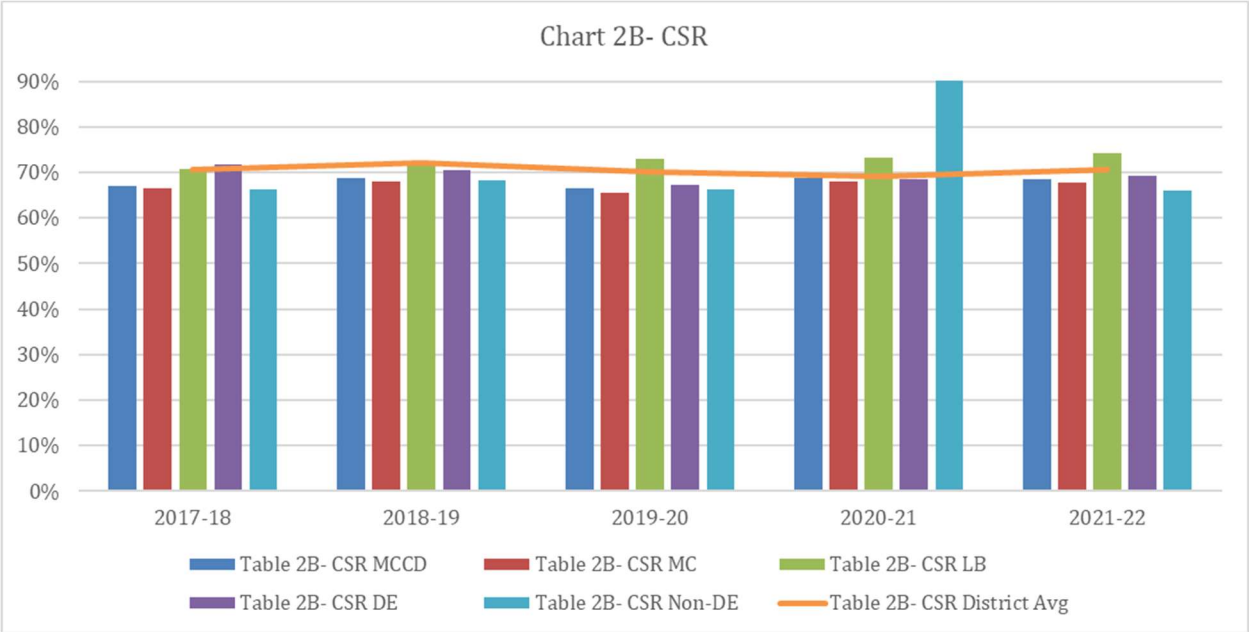
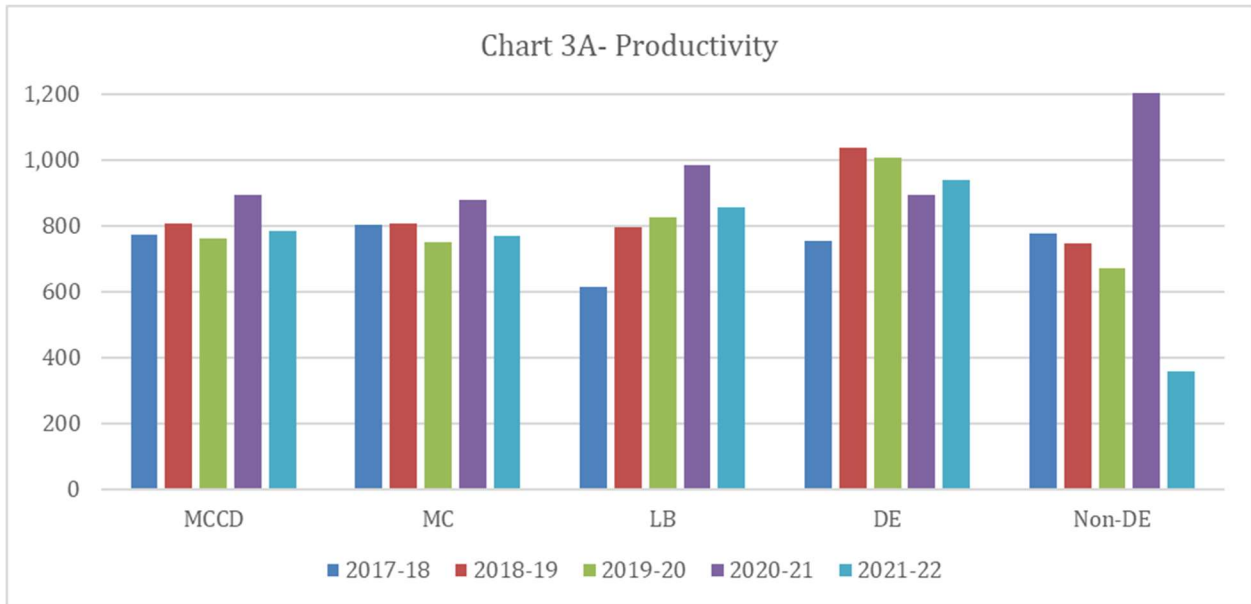


Table 2B- CSR						
CSR	MCCD	MC	LB	DE	Non-DE	District Avg
2017-18	67.03%	66.42%	70.79%	71.64%	66.21%	70.59%
2018-19	68.70%	68.13%	72.41%	70.42%	68.21%	72.07%
2019-20	66.56%	65.47%	72.95%	67.37%	66.22%	70.11%
2020-21	68.64%	67.89%	73.16%	68.51%	90.91%	69.11%
2021-22	68.60%	67.71%	74.24%	69.19%	66.00%	70.56%



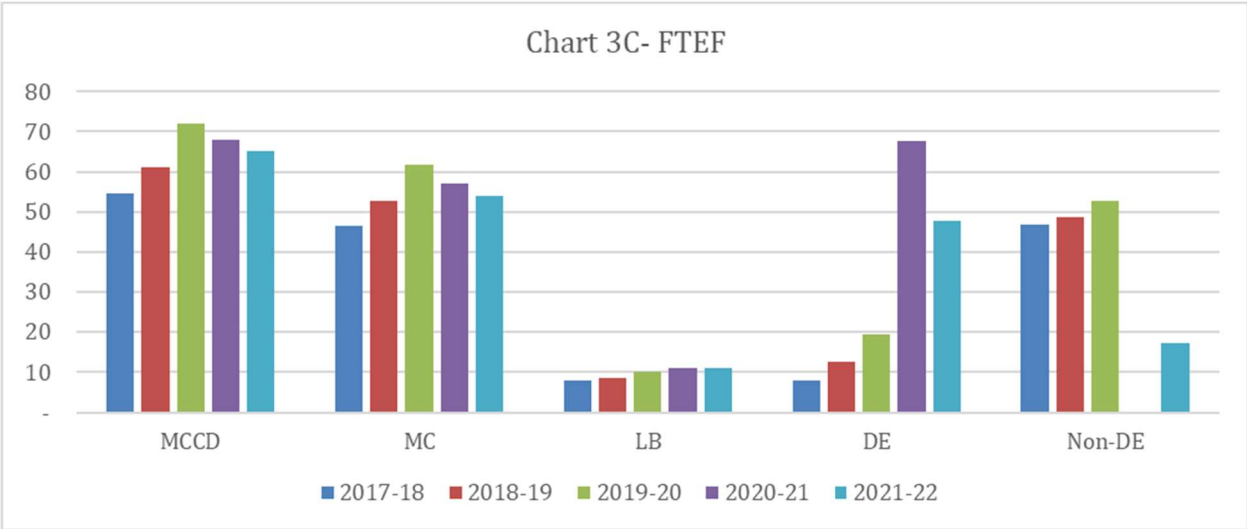
### 3) Staffing

<b>Table 3A- Productivity</b>					
Productivity	MCCD	MC	LB	DE	Non-DE
2017-18	774.93	802.29	615.39	754.81	778.36
2018-19	806.28	807.90	796.33	1,038.69	745.55
2019-20	762.75	752.09	827.36	1,007.94	672.40
2020-21	895.93	878.92	983.98	894.24	1,463.37
2021-22	785.14	770.13	857.55	939.58	360.47

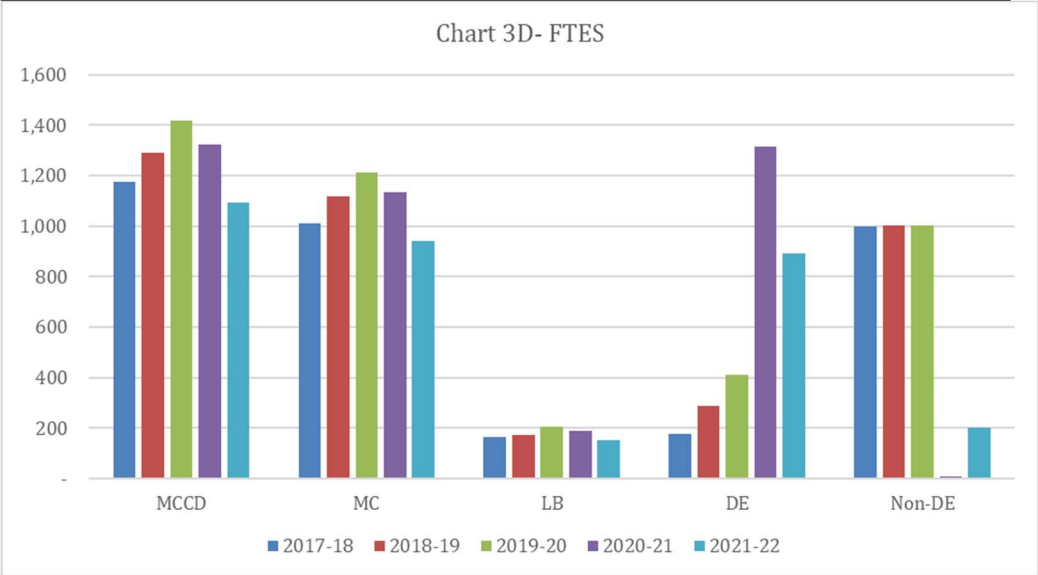


<b>Table 3B- WSCH</b>					
WSCH	MCCD	MC	LB	DE	Non-DE
2017-18	42,352.24	37,429.14	4,923.10	6,000.76	36,351.48
2018-19	49,405.94	42,556.94	6,849.00	13,185.83	36,220.11
2019-20	54,957.33	46,518.21	8,439.12	19,554.00	35,403.33
2020-21	60,880.18	50,056.41	10,823.78	60,584.58	295.60
2021-22	51,232.33	41,627.75	9,604.58	44,959.13	6,273.20

FTEF	MCCD	MC	LB	DE	Non-DE
2017-18	54.65	46.65	8.00	7.95	46.70
2018-19	61.28	52.68	8.60	12.69	48.58
2019-20	72.05	61.85	10.20	19.40	52.65
2020-21	67.95	56.95	11.00	67.75	0.20
2021-22	65.25	54.05	11.20	47.85	17.40



FTES	MCCD	MC	LB	DE	Non-DE
2017-18	1,176.02	1,011.91	164.10	178.00	998.02
2018-19	1,292.04	1,117.82	174.22	286.80	1,005.24
2019-20	1,417.25	1,210.97	206.28	412.29	1,004.96
2020-21	1,323.41	1,135.51	187.90	1,315.70	7.71
2021-22	1,093.30	942.68	150.63	891.90	201.40



4) Classes Filled

Table 4A- % Filled						
% Filled	MCCD	MC	LB	DE	Non-DE	District Avg
2017-18	74.05%	74.84%	69.52%	76.31%	73.68%	66.36%
2018-19	71.64%	71.50%	72.54%	77.14%	70.23%	64.91%
2019-20	67.53%	66.88%	71.60%	69.09%	66.94%	61.06%
2020-21	64.45%	64.96%	61.62%	64.74%	39.18%	58.26%
2021-22	60.10%	62.12%	49.96%	66.91%	41.31%	55.70%

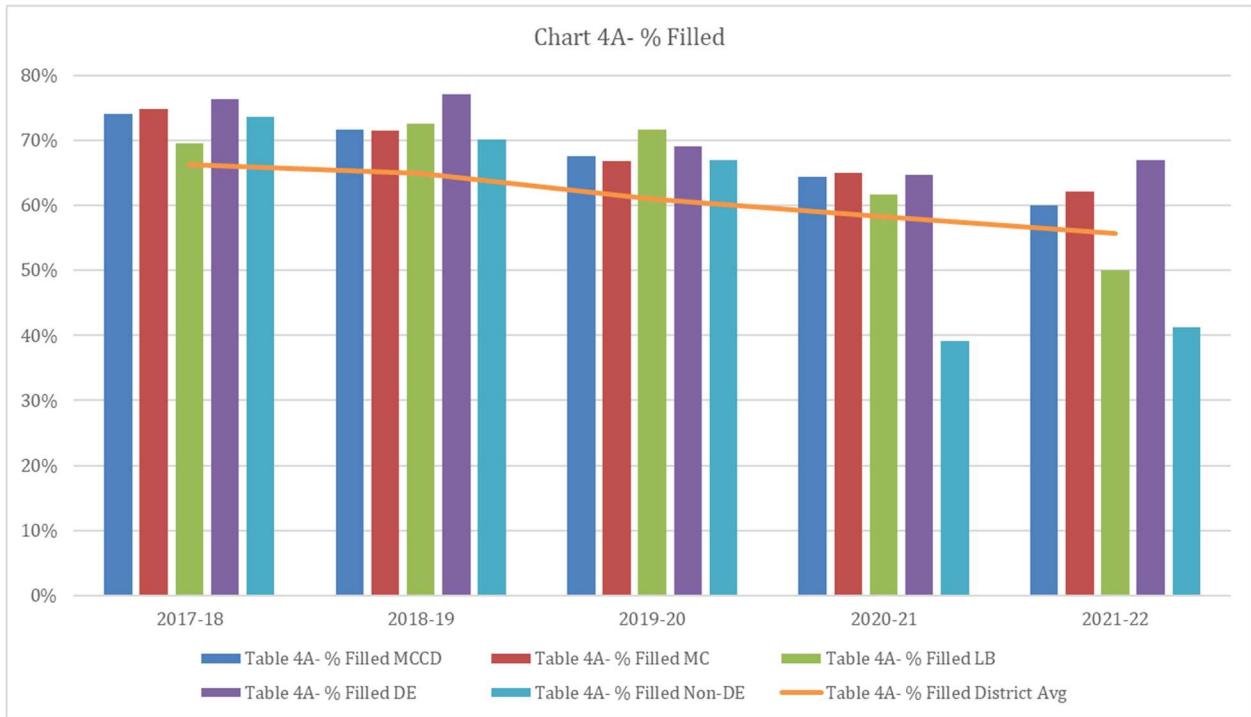




Table 4B- Class Average						
Average	MCCD	MC	LB	DE	Non-DE	District Avg
2017-18	36.71	36.94	35.35	38.23	36.46	23.35
2018-19	36.96	37.11	36.00	40.72	36.02	23.00
2019-20	33.92	33.92	33.94	36.24	33.09	21.58
2020-21	32.12	33.61	25.52	32.27	19.00	20.86
2021-22	28.25	30.69	18.89	31.71	18.99	19.56

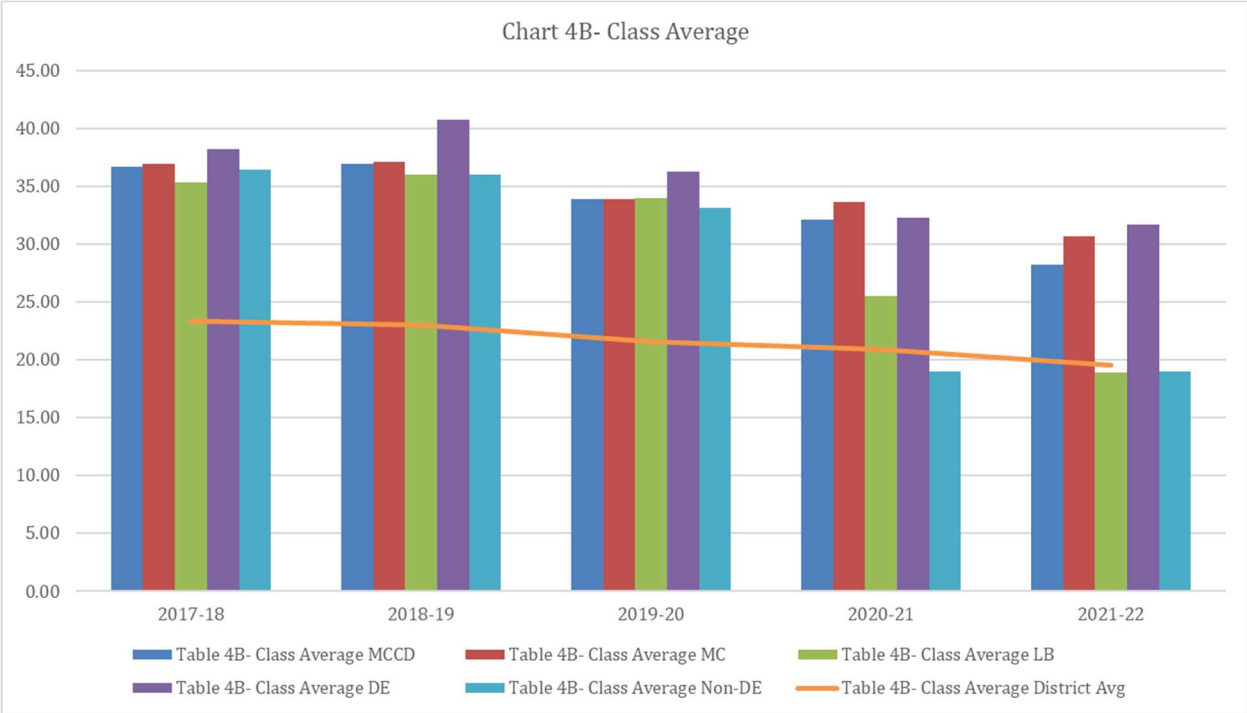
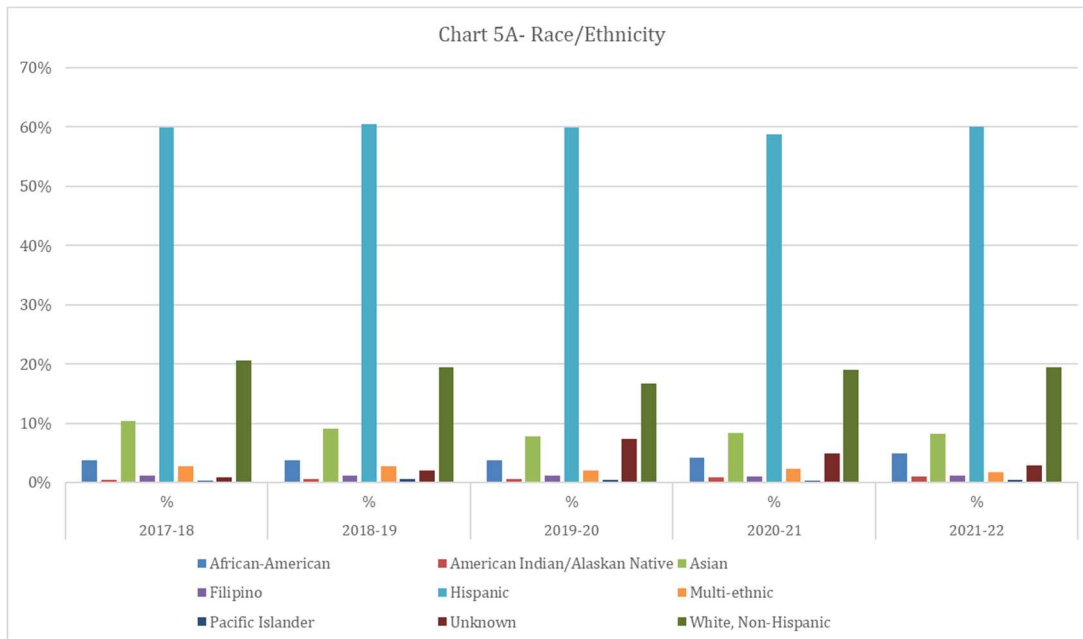


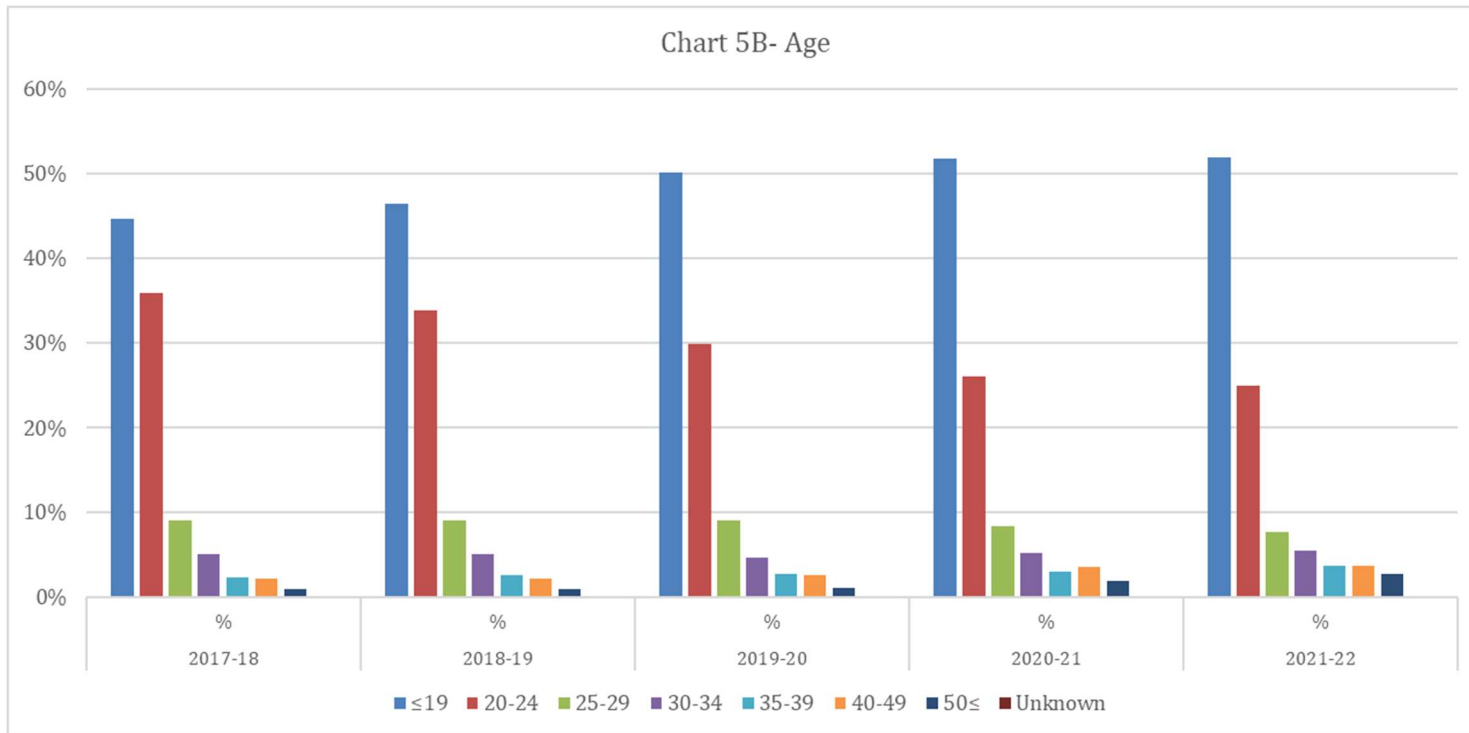
Table 4C- Number of Sections					
# Sec	MCCD	MC	LB	DE	Non-DE
2017-18	278	238	40	39	239
2018-19	306	263	43	61	245
2019-20	356	304	52	94	262
2020-21	347	283	64	343	4
2021-22	338	268	70	246	92

5) Demographics

Table 5A- Demographics	2017-18		2018-19		2019-20		2020-21		2021-22		District Avg
	N	%	N	%	N	%	N	%	N	%	%
African-American	443	3.74%	496	3.81%	543	3.82%	553	4.17%	533	4.89%	3.13%
American Indian/ Alaskan Native	51	0.43%	83	0.64%	89	0.63%	119	0.90%	106	0.97%	0.47%
Asian	1,224	10.34%	1,184	9.10%	1,108	7.80%	1,118	8.43%	895	8.22%	7.87%
Filipino	133	1.12%	148	1.14%	163	1.15%	145	1.09%	127	1.17%	0.96%
Hispanic	7,090	59.88%	7,866	60.46%	8,524	59.99%	7,790	58.77%	6,538	60.03%	58.07%
Multi-ethnic	320	2.70%	360	2.77%	297	2.09%	315	2.38%	198	1.82%	2.83%
Pacific Islander	43	0.36%	81	0.62%	61	0.43%	39	0.29%	54	0.50%	0.28%
Unknown	104	0.88%	258	1.98%	1,038	7.30%	646	4.87%	324	2.97%	7.08%
White, Non-Hispanic	2,433	20.55%	2,535	19.48%	2,387	16.80%	2,530	19.09%	2,117	19.44%	19.30%



Age	2017-18		2018-19		2019-20		2020-21		2021-22		District Avg
	N	%	N	%	N	%	N	%	N	%	%
≤19	5,294	44.71%	6,038	46.41%	7,121	50.11%	6,868	51.81%	5,646	51.84%	34.38%
20-24	4,246	35.86%	4,405	33.86%	4,252	29.92%	3,460	26.10%	2,715	24.93%	27.42%
25-29	1,059	8.94%	1,176	9.04%	1,269	8.93%	1,107	8.35%	837	7.68%	11.64%
30-34	603	5.09%	648	4.98%	663	4.67%	693	5.23%	599	5.50%	7.72%
35-39	274	2.31%	340	2.61%	391	2.75%	390	2.94%	400	3.67%	5.31%
40-49	251	2.12%	280	2.15%	363	2.55%	472	3.56%	399	3.66%	6.62%
50≤	114	0.96%	124	0.95%	149	1.05%	253	1.91%	290	2.66%	6.67%
Unknown	0	0.00%	0	0.00%	2	0.01%	12	0.09%	6	0.06%	0.24%



Gender	2017-18		2018-19		2019-20		2020-21		2021-22		District Avg
	N	%	N	%	N	%	N	%	N	%	%
Female	7,064	59.66%	7,813	60.05%	8,716	61.34%	8,523	64.30%	6,688	61.40%	60.71%
Male	4,751	40.12%	5,157	39.64%	5,456	38.40%	4,662	35.17%	4,157	38.17%	38.02%
Unknown	26	0.22%	41	0.32%	38	0.27%	70	0.53%	47	0.43%	1.27%
<b>TOTAL</b>	<b>11,841</b>	<b>100.00%</b>	<b>13,011</b>	<b>100.00%</b>	<b>14,210</b>	<b>100.00%</b>	<b>13,255</b>	<b>100.00%</b>	<b>10,892</b>	<b>100.00%</b>	<b>100.00%</b>

