

Glossary of Terms

Abbreviations

- MC or MCCD—Merced Campus, including off-site locations other than Los Banos
- LB—Los Banos Campus
- Area 1—Science, Technology, Engineering and Math
- Area 2—English and Humanities. Plus honors, work experience, tutorial
- Area 3—Agriculture and Industrial Technology
- Area 4—Allied Health, Child Development, Public Safety, Kinesiology
- Area 5—Fine & Performing Arts and Social Sciences
- Area 6—Learning Resource Center. Plus Distance Education, Inmate Education
- Area 7—Los Banos Campus and off-campus centers
- Area 9—Business, Adult Education, Noncredit & Workforce Development; BRC
- Area LRC/SS—Learning Resources Center/Student Services (including LRNR, STGV and GUID and Inmate Education and Dual Enrollment courses)
- FTEF—Full-time Equivalent Faculty, a measure of teaching load in a given term
- FTES—Full-time Equivalent Student, formerly called “Average Daily Attendance.” It's a measure of workload based on enrollment and attendance. FTES is a calculation used by the state to determine funding levels per student as a measure of enrollment. One FTES represents 525 class (contact) hours of student instruction/activity in credit and noncredit courses. This is based on a theoretical student being enrolled in courses for 3 hours a day, 5 days a week for an academic year of 35 weeks (1 FTES = 3 x 5 x 35 = 525).
- WSCH—Weekly Student Contact Hours, a measure of time spent on instruction per week times the number of students in the class, and is a measure of revenue. A class with 30 students meeting 3 hours a week has 90 WSCH. The more students enrolled in a class, the higher the WSCH.
- AB 288—Dual Enrollment/High School courses
- CTE—Career Technical Education Fast-Track
- DE—Distance Education (includes hybrid, 100% internet, correspondence)
- Non-DE—Non-Distance Education
- ET—Embedded Tutor
- IE—Inmate Education
- LC—Learning Community
- OL—Overload
- SI—Supplemental Instruction
- Sec—Course Section
- ST—Short-Term

Terms

- **Enrollment**—number of students in at least one course who receives any grade (A, B, C, P, D, F, NP, W, EW, FW, MW, I). Enrollment may be duplicated (each student is counted once for each course enrolled in), or unduplicated (each student is counted only once regardless of the number of courses enrolled in)
- **Completion Rate or Course Completion Rate (CCR)**—percent of students enrolled who completed the course (retained until the end of the semester), defined as a receiving a letter grade A, B, C, P, D, F, NP, I. *Formerly Retention.*
Numerator: A, B, C, P, D, F, NP, I
Denominator: A, B, C, P, D, F, NP, W, EW, FW, MW, RD, I
- **Success Rate or Course Success Rate (CSR)**—percent of students enrolled who receive a letter grade A, B, C, P.
Numerator: A, B, C, P
Denominator: A, B, C, P, D, F, NP, W, EW, FW, MW, RD, I
- **Persistence (term-to-term)**: Those students who receive any grade persists (enrolls in) the following term (i.e. fall to spring). Students who drop are not considered.
 - *Initial term*: Student enrolls in at least one course and receives any grade (A, B, C, P, D, F, NP, W, EW, FW, MW, RD, I)
 - *Following term*: Student enrolls in at least one course and receives any grade (A, B, C, P, D, F, NP, W, EW, FW, MW, RD, I)
 - *Persistence rate (term-to-term)*: The percent of students who persist from one semester to the next semester.
 - **NOTE**: This definition can apply to the course or program-level. Persistence is different from progress.
- **Progress**: Measured by those students who move from one level of the sequence to the next level (such as, non-credit to credit, MATH-04A to MATH-04B).
- **Productivity**: Measured by WSCH divided by FTEF. This calculation can be thought of as a measure of productivity (revenue divided by cost). The higher the number, the more cost effective a class can be considered to be.

NOTE: The data is as of Census.

Courses associated with the Computation ISLO

MATH-02
MATH-02H
MATH-04A
MATH-04B
MATH-04C
MATH-06
MATH-08
MATH-10
MATH-15
MATH-20A
MATH-20B
MATH-25
MATH-26
MATH-C
PSYC-05

2) Student Performance

<i>Definitions</i>
<i>Completion Rate or Course Completion Rate (CCR)—percent of students enrolled who completed the course (retained until the end of the semester), defined as a receiving a letter grade A, B, C, P, D, F, NP, I. Formerly Retention.</i>
<i>Success Rate or Course Success Rate (CSR)—percent of students enrolled who receive a letter grade A, B, C, P.</i>

CCR	MCCD	MC	LB	DE	Non-DE	District Avg
2017-18	79.79%	79.01%	85.71%	68.00%	81.52%	85.32%
2018-19	82.17%	80.71%	90.76%	69.23%	84.14%	86.01%
2019-20	79.19%	78.11%	87.09%	67.93%	80.89%	84.11%
2020-21	78.39%	77.79%	82.84%	78.39%	-	82.46%
2021-22	81.91%	80.95%	90.13%	82.13%	81.04%	85.85%

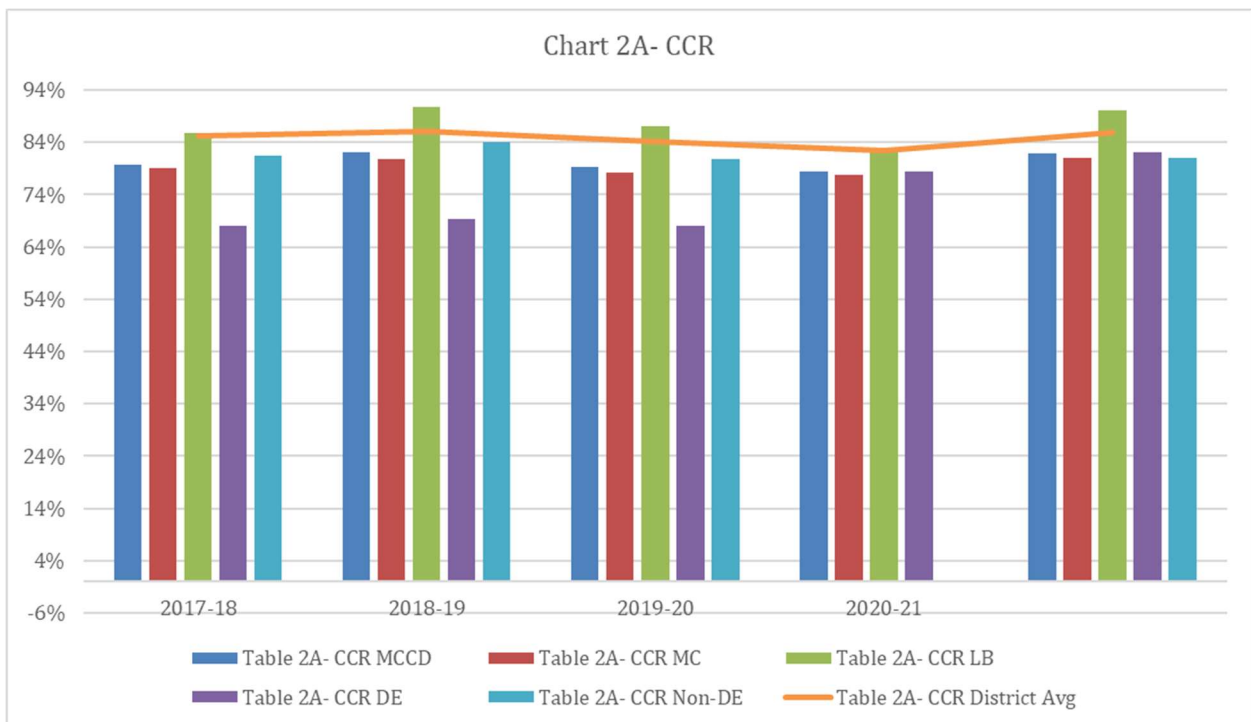
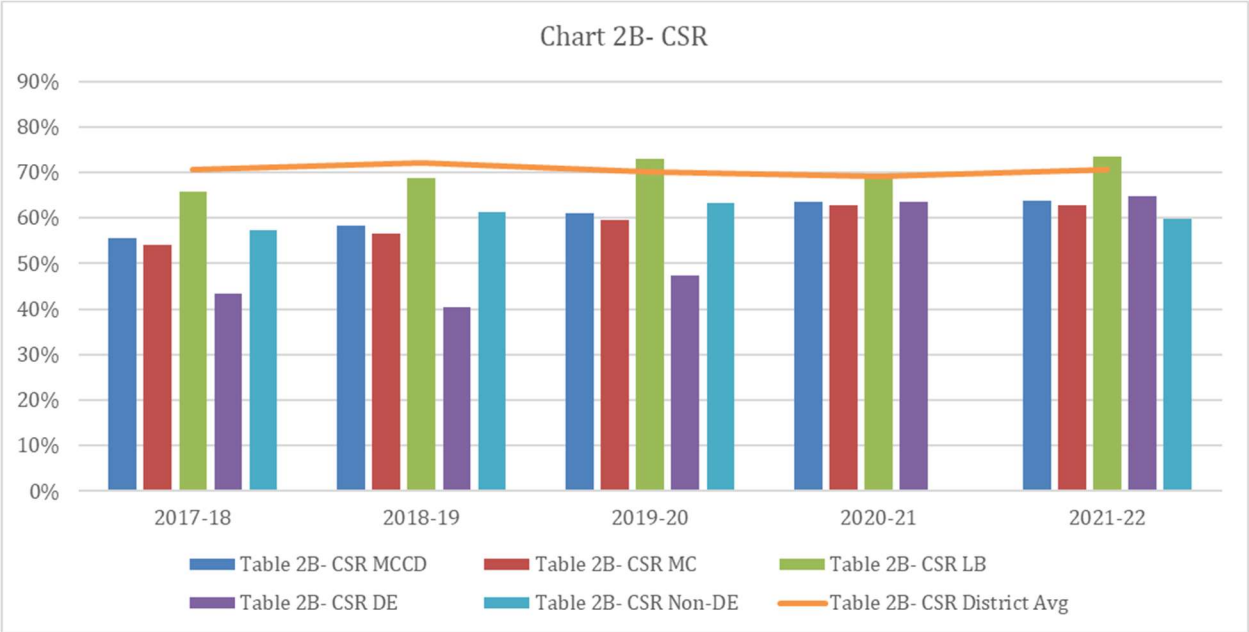


Table 2B- CSR						
CSR	MCCD	MC	LB	DE	Non-DE	District Avg
2017-18	55.48%	54.14%	65.66%	43.31%	57.26%	70.59%
2018-19	58.41%	56.65%	68.79%	40.33%	61.17%	72.07%
2019-20	61.12%	59.49%	73.05%	47.46%	63.19%	70.11%
2020-21	63.46%	62.72%	68.93%	63.46%	-	69.11%
2021-22	63.85%	62.71%	73.61%	64.87%	59.71%	70.56%



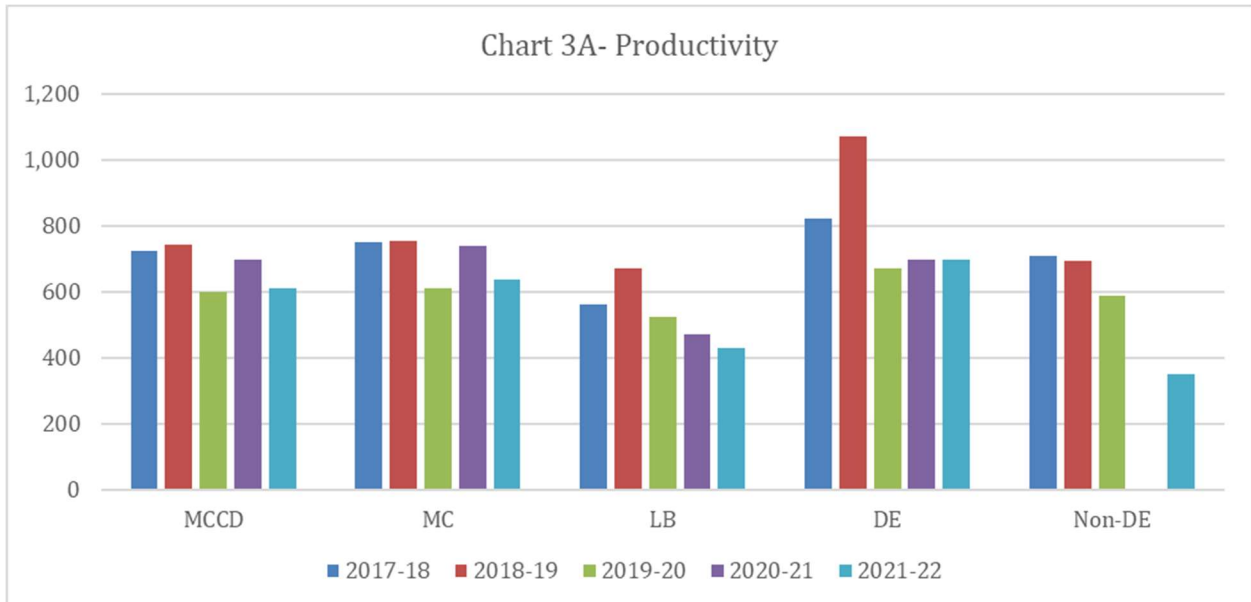
3) Staffing

Definitions

Productivity	WSCH divided by FTEF
WSCH	Weekly Student Contact Hours
FTEF	Full-Time Equivalent Faculty
FTES	Full-Time Equivalent Student

Note: Productivity measures may change from previous years.

Productivity	MCCD	MC	LB	DE	Non-DE
2017-18	726.00	751.59	563.18	823.35	710.90
2018-19	743.11	756.45	670.52	1,073.07	693.28
2019-20	601.91	612.46	525.38	673.28	590.46
2020-21	699.64	739.75	472.53	699.64	-
2021-22	610.60	636.89	429.84	697.62	352.28



WSCH	MCCD	MC	LB	DE	Non-DE
2017-18	31,363.69	28,059.71	3,303.98	4,776.00	26,587.69
2018-19	30,963.41	26,627.41	4,336.00	5,866.81	25,096.60
2019-20	25,842.39	23,110.39	2,732.00	3,994.80	21,847.59
2020-21	27,659.21	24,855.51	2,803.70	27,659.21	-
2021-22	20,516.19	18,682.19	1,834.00	17,533.59	2,982.60

Table 3C- FTEF					
FTEF	MCCD	MC	LB	DE	Non-DE
2017-18	43.20	37.33	5.87	5.80	37.40
2018-19	41.67	35.20	6.47	5.47	36.20
2019-20	42.93	37.73	5.20	5.93	37.00
2020-21	39.53	33.60	5.93	39.53	-
2021-22	33.60	29.33	4.27	25.13	8.47

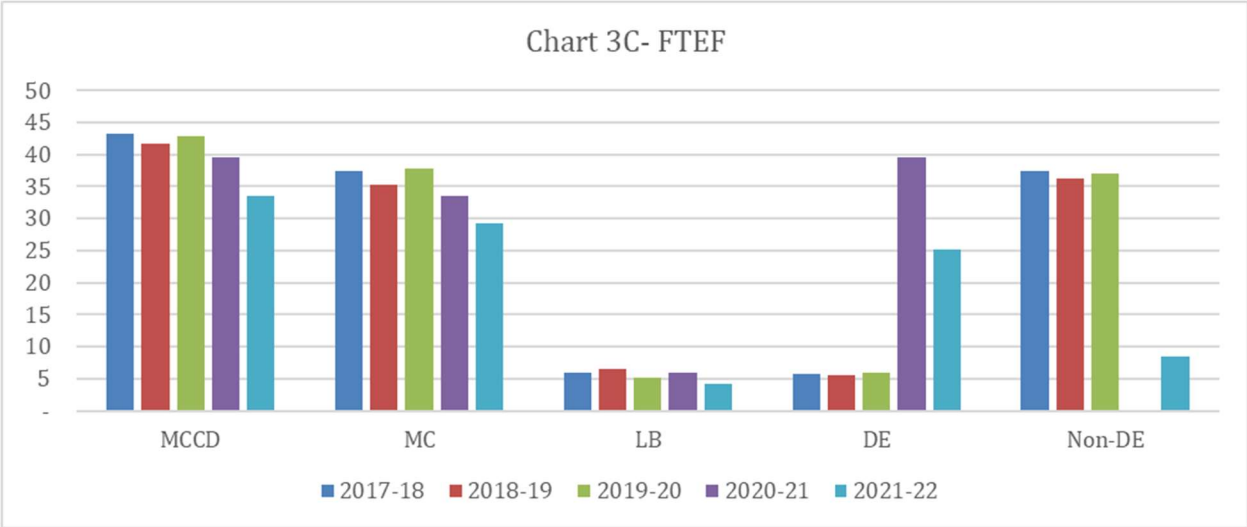
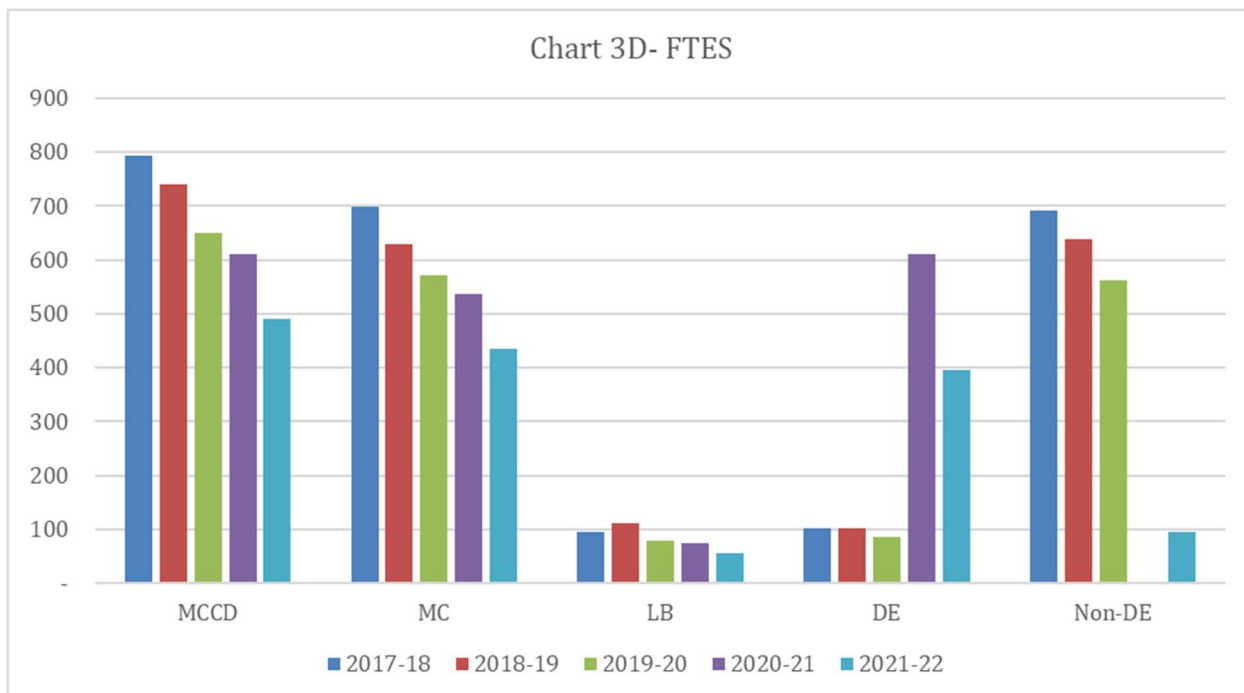


Table 3D- FTES					
FTES	MCCD	MC	LB	DE	Non-DE
2017-18	794.17	699.00	95.17	102.80	691.37
2018-19	739.96	628.10	111.86	100.87	639.09
2019-20	649.20	570.17	79.03	86.40	562.80
2020-21	610.68	536.15	74.53	610.68	-
2021-22	490.46	434.53	55.93	395.98	94.48

Chart 3D- FTES



4) Classes Filled

Table 4A- % Filled						
% Filled	MCCD	MC	LB	DE	Non-DE	District Avg
2017-18	68.00%	68.05%	67.65%	55.94%	69.84%	66.36%
2018-19	66.68%	65.71%	72.23%	58.16%	67.94%	64.91%
2019-20	55.74%	54.76%	63.21%	44.62%	57.56%	61.06%
2020-21	58.45%	59.86%	50.09%	58.45%	-	58.26%
2021-22	58.14%	58.12%	58.23%	61.85%	46.64%	55.70%

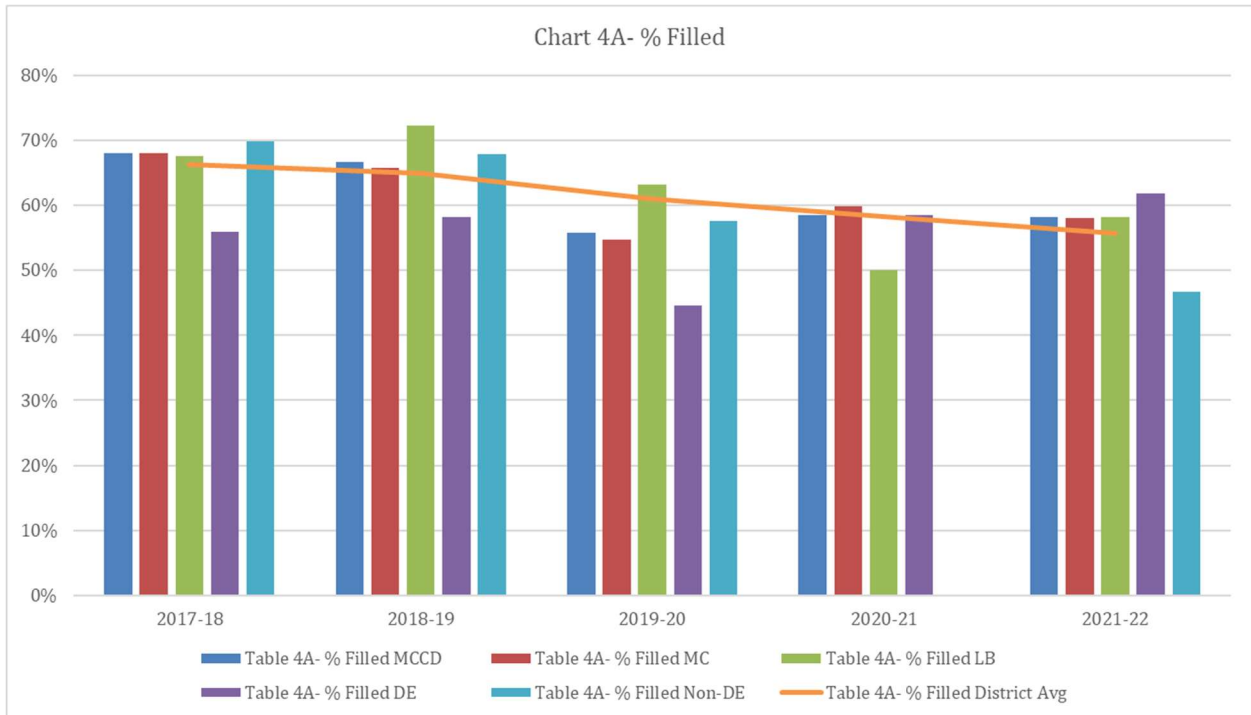


Table 4B- Class Average						
Average	MCCD	MC	LB	DE	Non-DE	District Avg
2017-18	30.14	30.36	28.67	24.92	30.93	23.35
2018-19	29.75	29.37	31.89	26.17	30.27	23.00
2019-20	23.64	23.37	25.63	20.08	24.19	21.58
2020-21	25.01	25.76	20.73	25.01	-	20.86
2021-22	24.05	24.14	23.39	25.96	18.49	19.56

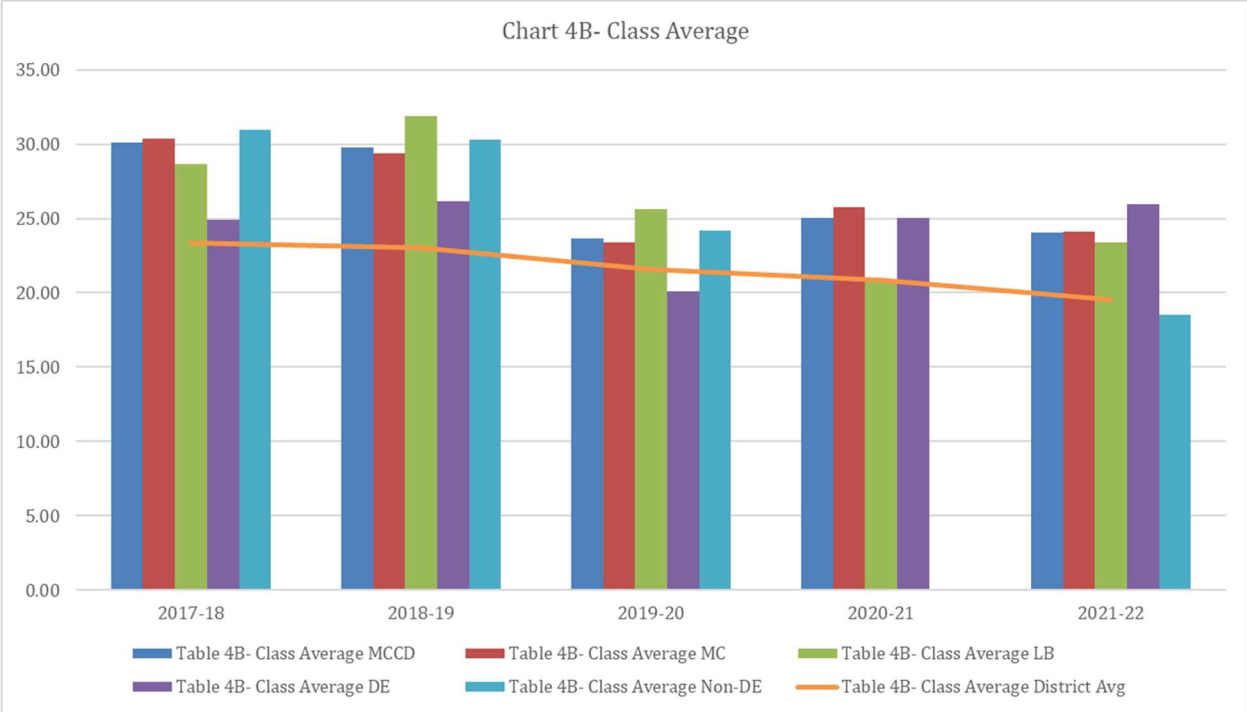
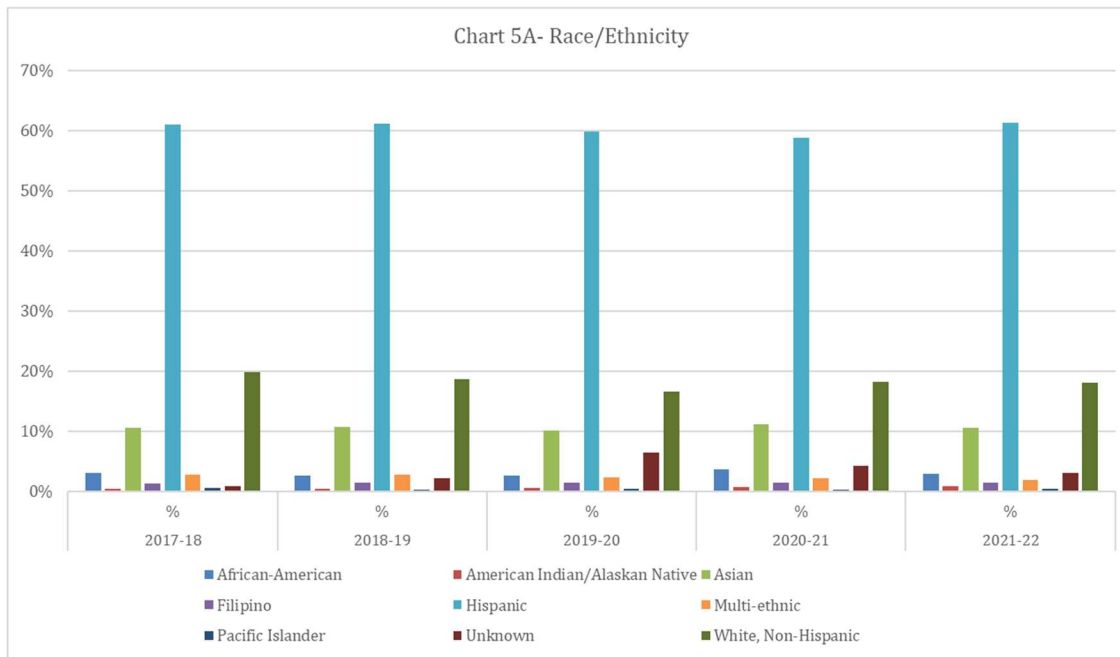


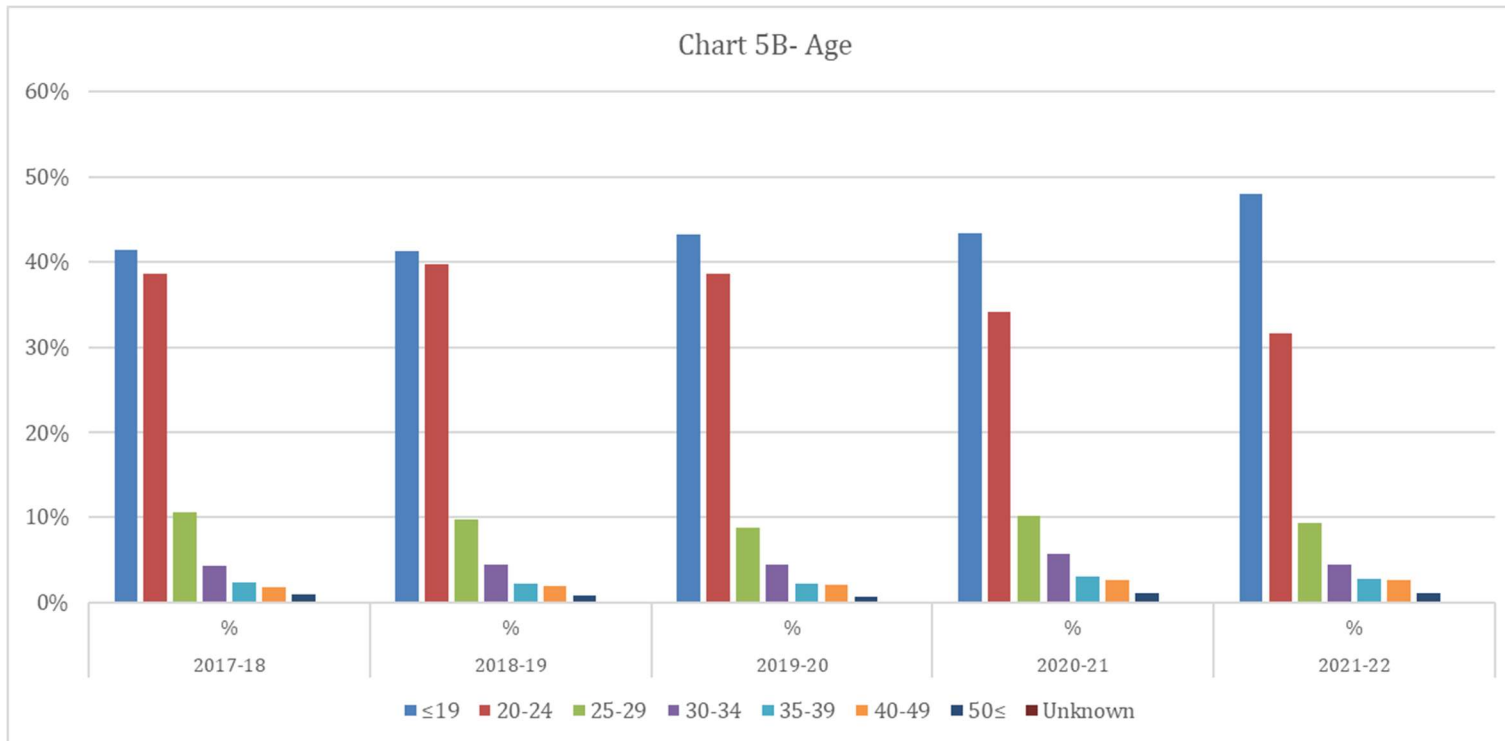
Table 4C- Number of Sections					
# Sec	MCCD	MC	LB	DE	Non-DE
2017-18	182	158	24	24	158
2018-19	180	153	27	23	157
2019-20	197	173	24	26	171
2020-21	175	149	26	175	-
2021-22	153	135	18	114	39

5) Demographics

Table 5A- Demographics		2017-18		2018-19		2019-20		2020-21		2021-22		District Avg
Race/Ethnicity	N	%	N	%	N	%	N	%	N	%	%	
African-American	206	3.01%	167	2.58%	153	2.62%	197	3.59%	131	2.94%	3.13%	
American Indian/ Alaskan Native	30	0.44%	25	0.39%	28	0.48%	33	0.60%	33	0.74%	0.47%	
Asian	723	10.55%	690	10.64%	590	10.10%	609	11.09%	466	10.46%	7.87%	
Filipino	87	1.27%	95	1.47%	82	1.40%	75	1.37%	60	1.35%	0.96%	
Hispanic	4,177	60.95%	3,964	61.14%	3,495	59.80%	3,226	58.74%	2,729	61.24%	58.07%	
Multi-ethnic	186	2.71%	181	2.79%	135	2.31%	115	2.09%	83	1.86%	2.83%	
Pacific Islander	31	0.45%	19	0.29%	20	0.34%	15	0.27%	15	0.34%	0.28%	
Unknown	58	0.85%	136	2.10%	377	6.45%	227	4.13%	134	3.01%	7.08%	
White, Non-Hispanic	1,355	19.77%	1,206	18.60%	964	16.50%	995	18.12%	805	18.07%	19.30%	



Age	2017-18		2018-19		2019-20		2020-21		2021-22		District Avg
	N	%	N	%	N	%	N	%	N	%	%
≤19	2,837	41.40%	2,674	41.25%	2,530	43.29%	2,382	43.37%	2,136	47.94%	34.38%
20-24	2,652	38.70%	2,575	39.72%	2,257	38.62%	1,873	34.10%	1,411	31.67%	27.42%
25-29	729	10.64%	632	9.75%	510	8.73%	556	10.12%	418	9.38%	11.64%
30-34	296	4.32%	283	4.37%	261	4.47%	312	5.68%	197	4.42%	7.72%
35-39	157	2.29%	144	2.22%	132	2.26%	163	2.97%	124	2.78%	5.31%
40-49	120	1.75%	124	1.91%	117	2.00%	146	2.66%	119	2.67%	6.62%
50≤	62	0.90%	51	0.79%	37	0.63%	59	1.07%	50	1.12%	6.67%
Unknown	0	0.00%	0	0.00%	0	0.00%	1	0.02%	1	0.02%	0.24%



Gender	2017-18		2018-19		2019-20		2020-21		2021-22		District Avg
	N	%	N	%	N	%	N	%	N	%	%
Female	3,702	54.02%	3,427	52.86%	3,175	54.33%	3,232	58.85%	2,500	56.10%	60.71%
Male	3,136	45.76%	3,039	46.88%	2,653	45.40%	2,242	40.82%	1,937	43.47%	38.02%
Unknown	15	0.22%	17	0.26%	16	0.27%	18	0.33%	19	0.43%	1.27%
TOTAL	6,853	100.00%	6,483	100.00%	5,844	100.00%	5,492	100.00%	4,456	100.00%	100.00%

