



Individual Performance Profile

ATI TEAS Version 7

Individual Name:	First Last	Test Date:	07/25/2022
Institution:	Program	Attempt:	4 of 4
Program Type:	ADN	Days Since Last Attempt:	0
Student Number:	123456789		

Scores

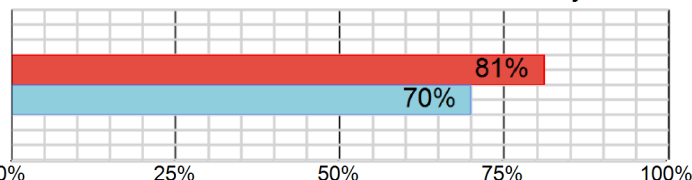
Total Score:

76.7%

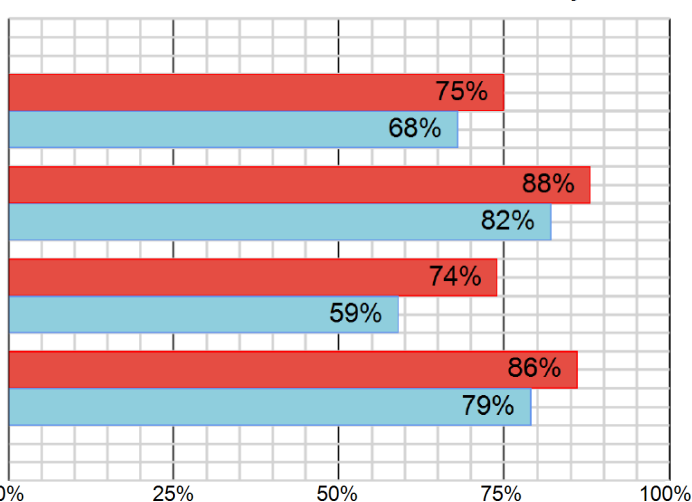
Academic Preparedness Level: **Proficient**

National Mean: 65.6% All BSN Programs Mean: 70.4%

Percentile Rank: % of students who scored at or below your score



Percentile Rank: % of students who scored at or below your score



Reading Score:

80.9%

Math Score:

87.5%

Science Score:

66.0%

English and Language Usage Score:

79.2%

National

All BSN Programs

Content areas do not add up to the total score

Topics To Review

Reading (39 items)

Key Ideas and Details (15 items, 93.3% answered correctly)

- Summarize a multi-paragraph text. (ATI TEAS Study Manual Unit 1, Chapter 1)
- Make inferences and draw conclusions about a text's purpose and meaning. (ATI TEAS Study Manual Unit 1, Chapter 1)
- Demonstrate comprehension of written directions. (ATI TEAS Study Manual Unit 1, Chapter 1)
- Locate specific information in a text. (ATI TEAS Study Manual Unit 1, Chapter 1)

Individual Performance Profile



ATI TEAS

Individual Name:	John Doe	Test Date:	4/15/2018
Institution:	Modesto JC	Attempt:	3 of 4
Program Type:	ADN	Days Since Last Attempt:	1541
Student Number:			

Scores

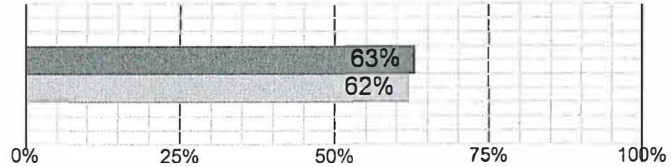
Total Score:

69.3%

Academic Preparedness Level: **Proficient**

National Mean: 65.6% All ADN Programs Mean: 66.1%

Percentile Rank: % of students who scored at or below your score



Reading Score:

83.0%

Math Score:

71.9%

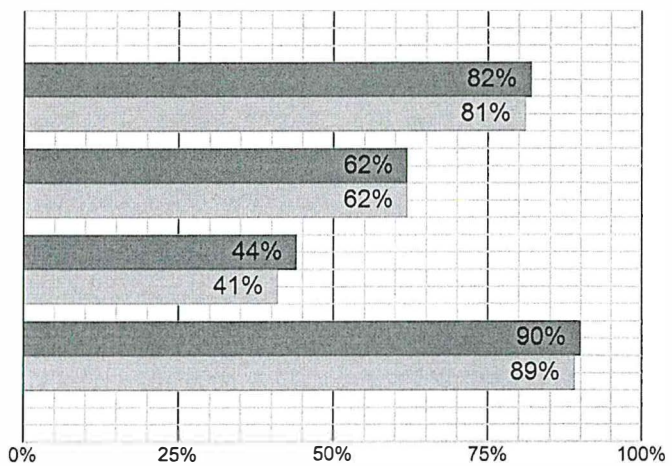
Science Score:

51.1%

English and Language Usage Score:

83.3%

Percentile Rank: % of students who scored at or below your score



National

All ADN Programs

Content areas do not add up to the total score

Topics To Review

Reading (47 items)

Key Ideas and Details (22 items, 90.9% answered correctly)

Identify specific information from a printed communication. (ATI TEAS Study Manual R.1.5)

Identify information from a graphic representation of information. (ATI TEAS Study Manual R.1.6)

Craft and Structure (14 items, 78.6% answered correctly)

Recognize structure of texts in various formats. (ATI TEAS Study Manual R.2.2)

Evaluate the author's point of view in a given text. (ATI TEAS Study Manual R.2.6)

Individual Performance Profile

Test of Essential Academic Skills V Form C



Individual Name:	John Doe	Adjusted Individual Total Score:	62.7%
Student Number:		ATI Academic Preparedness Level:	Proficient
Institution:	CA State Stanislaus TEAS	National Mean:	64.3%
Program Type:	BSN	Program Mean:	70.6%
	1/24/2014	National Percentile Rank:	45
# of Questions:	150	Program Percentile Rank:	26
Attempt:	2 of 4		
Days since last attempt:	19		

Scores

Sub-Scale	# Items	Adjusted		Adjusted		Adjusted Individual Score (% correct)											
		Individual Score	Mean	Percentile Rank	Individual Score (% correct)	1	10	20	30	40	50	60	70	80	90	100	
TEAS Reading	42	71.4%	70.5%	75.1%	49	36											
Paragraph and Passage Comprehension	19	73.7%	70.6%	75.0%													
Informational Source Comprehension	23	69.6%	71.9%	76.8%													
TEAS Mathematics	30	76.7%	69.0%	75.3%	66	51											
Numbers and Operations	19	73.7%	70.3%	75.8%													
Algebraic Applications	4	75.0%	69.0%	78.8%													
Data Interpretation	3	100.0%	65.1%	70.6%													
Measurement	4	50.0%	64.6%	72.5%													
TEAS Science	48	43.8%	53.6%	62.0%	33	15											
Human Body Science	11	45.5%	60.9%	65.7%													
Life Science	15	46.7%	53.4%	63.4%													
Earth and Physical Science	14	42.9%	53.9%	64.6%													
Scientific Reasoning	8	75.0%	65.2%	71.5%													
TEAS English and Language Usage	30	63.3%	63.8%	68.6%	51	37											
Grammar and Word Meanings in Context	15	40.0%	64.8%	69.8%													
Spelling and Punctuation	9	88.9%	60.1%	66.0%													
Structure	6	83.3%	69.5%	73.8%													

