

SCIENCE BUILDING REMODEL MERCED COLLEGE



Merced Community College
Monthly Project Report
Science Building Remodel



Project Team

Architect/Engineer

Lionakis Beaumont Design Group
Dave Younger, Principal
Toby Insinna, Project Manager
GDR Engineering, Inc.
Turley and Associates
Ken Rubitsky & Associates
Smith, Fause & McDonald, Inc.
David Bigler Associates

Construction Manager

Parsons Brinckerhoff Constr Svcs
Bruce Rich, Project Executive
Tony Valdez, Project Manager
Janet Hughes, Project Admin

Inspector Of Record

United Inspection Services,
John Hill

Facility Delivery Team

Terry Ruscoe, Director Facilities
Rick Souhrada, Director Maint.
Sheila Flores, Facility Planner

COLLEGE OFFICIALS

Board of Trustees

Eugene J. Vierra, President
Robert Haden, Vice President
Jinet Troost, Clerk
Les McCabe, Member
Eva de Long, Member
Lewis Braxton, Member
Jim Glidden, Member

Executive Administration

Benjamin Duran, President
Larry Johnson, VP Admin
John Spevak, VP Instruction
Ann Newins, VP Student Svcs
Mike Cuchna, Assoc. VP
Harry Gossett, Dean
Sarah Greene, Dean
Robert Lenz, Dean
Karyn Wiens, Dean
Jim Bonstein, Dean

Project Overview

The Science Building Remodel consists of renovating the existing building and adding a new wing on the northwest corner of the existing structure. The renovation will provide expanded learning opportunities for the students and staff of Merced College and Merced Community. The 43,000 square foot facility will have new labs, classrooms, study rooms, meeting rooms, offices and a cadaver room which will assist its visitors with their projects and research. The project is expected to take approximately one year to complete.

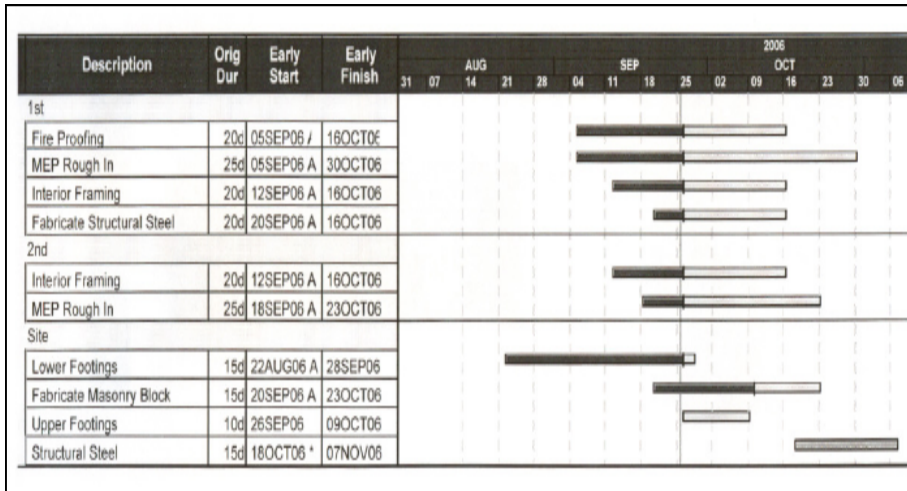


PROJECT STATUS REPORT

Original Contracts	\$	12,463,000
Approved Changes	\$	-
Pending Changes	\$	248,332
Current Contracts	\$	12,711,332
% Changes		1.993%

Monthly Report Number 3
September 2006

Work Schedule



Framing at Interior

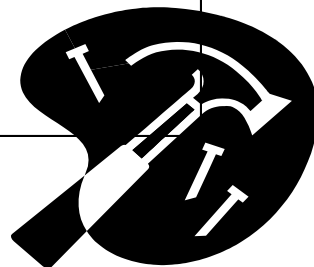


This Month Activities

- Footings
- Wall Framing
- MEP Rough-In
- Patch Holes on Floor
- Fabricate Steel for Building Addition

Next Month Planned Activities

- Fire Proof 1st Floor
- Footings
- Masonry
- Wall Framing
- Pre-Rock
- MEP Rough-In
- Steel
- Roofing



Progress on Schedule

