

BUSINESS RESOURCE CENTER MERCED COLLEGE



Merced Community College
Monthly Project Report
Business Resource Center



Project Team

Architect/Engineer

Lionakis Beaumont Design Group
Dave Younger, Principal
Dennis Guerra, Project Mngr
Turley and Associates
Ken Rubitsky & Associates
Smith, Fause & McDonald, Inc.
David Bigler Associates

Construction Manager

PB Americas, Inc
Bruce Rich, Project Executive
Tony Valdez, Project Manager

Inspector Of Record

United Inspection Services,
John Hill
Carl Horner

Facility Delivery Team

Terry Ruscoe, Director Facilities
Rick Souhrada, Director Maint.
Sheila Flores, Facility Planner

COLLEGE OFFICIALS

Board of Trustees

Robert Haden, President
Jinet Troost, Vice President
Lewis S. Braxton, Clerk
Eva de Long, Member
Jim Glidden, Member
Les McCabe, Member
Eugene J. Vierra, Member

Executive Administration

Benjamin Duran, President
Larry Johnson, VP Admin
John Spevak, VP Instruction
Anne Newins, VP Student Svcs
Mike Cuchna, Assoc. VP
Harry Gossett, Dean
Sarah Greene, Dean
Robert Lenz, Dean
Karyn Wiens, Dean
Jim Bonstein, Interim Dean

Project Overview

The New Business Resource Center will provide expanded learning opportunities for the students and staff of Merced College and the Merced Community. The 21,343 square foot two-story facility will include computer labs, lecture rooms, study rooms, meeting rooms, and offices. The Merced College Business Resource Center will be centrally located in the beautiful Downtown Merced on 19th Street between M & N Streets. The project is expected to take approximately one year to complete.



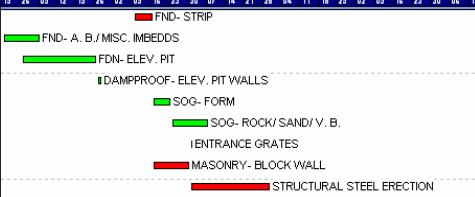
PROJECT STATUS REPORT

| | | |
|--------------------|----|-----------|
| Original Contracts | \$ | 5,345,000 |
| Approved Changes | \$ | 1,417 |
| Pending Changes | \$ | - |
| Current Contracts | \$ | 5,346,417 |
| % Changes | | 0.027% |

Monthly Report Number 3
March 2007

Work Schedule

| Activity ID | Description | Orig Dur | Early Start | Early Finish | To | Fri | Sat | Sun | 2007 | Jan | Feb | Mar | Apr | May | Jun | Jul | Aug |
|-------------|-----------------------------|----------|-------------|--------------|----|-----|-----|-----|------|-----|-----|-----|-----|-----|-----|-----|-----|
| 10180 | FND- STRIP | 5d | 10APR07 | 16APR07 | | | | | | | | | | | | | |
| 10190 | FND- A, B / MISC. IMBEDDS | 10d | 20FEB07 | 05MAR07 | | | | | | | | | | | | | |
| 10200 | FDN- ELEV. PIT | 20d | 27FEB07 | 26MAR07 | | | | | | | | | | | | | |
| 10208 | DAMP-PROOF- ELEV. PIT WALLS | 2d | 27MAR07 | 28MAR07 | | | | | | | | | | | | | |
| 10210 | SOG- FORM | 5d | 17APR07 | 23APR07 | | | | | | | | | | | | | |
| 10220 | SOG- ROCK/ SAND/ V. B. | 10d | 24APR07 | 07MAY07 | | | | | | | | | | | | | |
| 10260 | ENTRANCE GRATES | 1d | 01MAY07 | 01MAY07 | | | | | | | | | | | | | |
| 10270 | MASONRY- BLOCK WALL | 10d | 17APR07 | 30APR07 | | | | | | | | | | | | | |
| 10290 | STRUCTURAL STEEL ERECTION | 21d | 01MAY07 | 30MAY07 | | | | | | | | | | | | | |



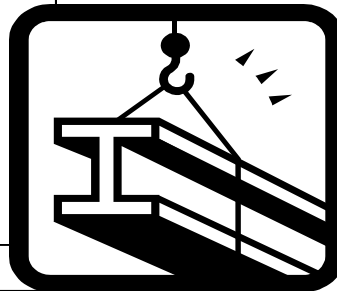
Under slab Electrical



Progress on Schedule

This Month Activities

- Poured all footings
- Poured elevator pit
- Placed slab edge forms
- Installed under slab electrical and plumbing
- Place under slab gravel, vapor barrier, sand and reinforcement



Next Month Planned Activities

- Pour Slab
- Build CMU Wall
- Erect Structural Steel

